

\$675,000 - 40 Rosewood Way, St. Albert

MLS® #E4417835

\$675,000

3 Bedroom, 2.50 Bathroom, 2,338 sqft
Single Family on 0.00 Acres

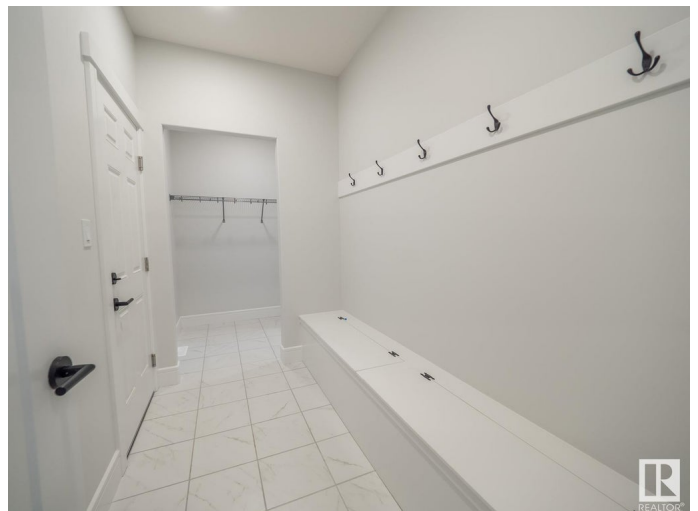
Riverside (St. Albert), St. Albert, AB

Your Dream Coventry Home w/ SEPARATE ENTRANCE Awaits! Step into modern luxury w/ this beautifully crafted home, designed w/ 9' ceilings for a bright & open feel. The chef-inspired kitchen is a true showstopper, w/ gorgeous cabinetry, quartz counters, tile backsplash, & spacious pantry. The Great Room, complete w/ a sleek electric fireplace, flows seamlessly into the dining nook, creating the perfect space for gatherings. A half bath, thoughtfully tucked beside the mudroom, adds extra convenience. Upstairs a luxurious primary suite with a 5pc ensuite featuring dual sinks, free standing soaker tub, & walk-in closets. Two additional bedrooms, main bath, bonus room, & laundry provide the perfect balance of comfort & functionality. Built with exceptional craftsmanship & meticulous attention to detail, every Coventry home is backed by the Alberta New Home Warranty Program. *Home is under construction, photos are not of actual home, some finishings may vary, some photos virtually staged*

Built in 2024

Essential Information

MLS® #	E4417835
Price	\$675,000
Bedrooms	3



Bathrooms	2.50
Full Baths	2
Half Baths	1
Square Footage	2,338
Acres	0.00
Year Built	2024
Type	Single Family
Sub-Type	Detached Single Family
Style	2 Storey
Status	Active

Community Information

Address	40 Rosewood Way
Area	St. Albert
Subdivision	Riverside (St. Albert)
City	St. Albert
County	ALBERTA
Province	AB
Postal Code	T8N 8B2

Amenities

Amenities	Carbon Monoxide Detectors, Ceiling 9 ft., Detectors Smoke, Smart/Program. Thermostat, Vinyl Windows, HRV System, 9 ft. Basement Ceiling
Parking	Double Garage Attached

Interior

Interior Features	ensuite bathroom
Appliances	None
Heating	Forced Air-1, Natural Gas
Fireplace	Yes
Fireplaces	Mantel
Stories	2
Has Basement	Yes
Basement	Full, Unfinished

Exterior

Exterior	Wood, Stone, Vinyl
Exterior Features	Golf Nearby, Playground Nearby

Roof	Asphalt Shingles
Construction	Wood, Stone, Vinyl
Foundation	Concrete Perimeter

Additional Information

Date Listed	January 13th, 2025
Days on Market	111
Zoning	Zone 24

DATA IS DEEMED RELIABLE BUT IS NOT GUARANTEED ACCURATE BY THE REALTORS® ASSOCIATION OF EDMONTON. COPYRIGHT 2025 BY THE REALTORS® ASSOCIATION OF EDMONTON. ALL RIGHTS RESERVED.Trademarks are owned or controlled by the Canadian Real Estate Association (CREA) and identify real estate professionals who are members of CREA (REALTOR®, REALTORS®) and/or the quality of services they provide (MLS®, Multiple Listing Service®)

Listing information last updated on May 3rd, 2025 at 10:32pm MDT