

\$1,089,000 - 4002 Ginsberg Crescent, Edmonton

MLS® #E4421175

\$1,089,000

4 Bedroom, 3.00 Bathroom, 2,621 sqft

Single Family on 0.00 Acres

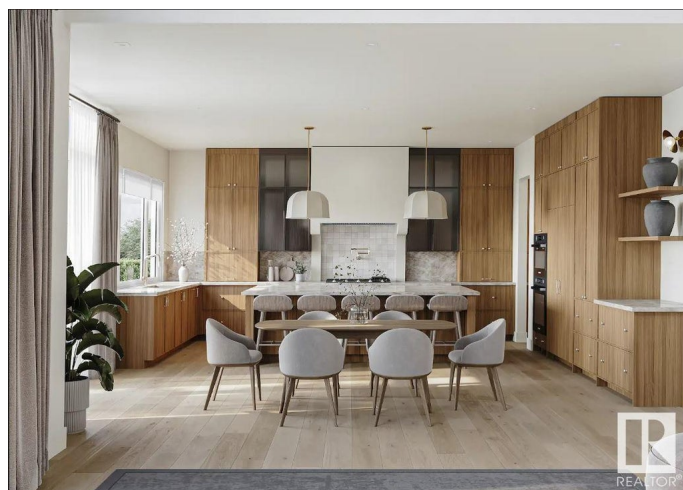
Granville (Edmonton), Edmonton, AB

Large executive property brought to you by Mill Street homes in very desirable 'Estates of Granville'. Triple front garage, 4 bedrooms upstairs with flex room on main floor, beautiful SW exposure 48' lot with 40' building pocket, gorgeous open plan, perfect for entertaining large or intimate gatherings!! Other features include wide plank engineered hardwood floors, chef's kitchen with upgraded appliance package and massive quartz island. Luxurious primary suite with spa ensuite and large walk in closet. Private flex room off the front entrance makes for a beautiful and bright home office or potential 5th bedroom above grade. Home is in planning stages providing a wonderful opportunity to make it your own with customizable choices. In addition to this home, we have other super desirable lot positions to choose from!!!

Built in 2025

Essential Information

| | |
|----------------|-------------|
| MLS® # | E4421175 |
| Price | \$1,089,000 |
| Bedrooms | 4 |
| Bathrooms | 3.00 |
| Full Baths | 3 |
| Square Footage | 2,621 |
| Acres | 0.00 |



| | |
|------------|------------------------|
| Year Built | 2025 |
| Type | Single Family |
| Sub-Type | Detached Single Family |
| Style | 2 Storey |
| Status | Active |

Community Information

| | |
|-------------|------------------------|
| Address | 4002 Ginsberg Crescent |
| Area | Edmonton |
| Subdivision | Granville (Edmonton) |
| City | Edmonton |
| County | ALBERTA |
| Province | AB |
| Postal Code | T5T 4V2 |

Amenities

| | |
|-----------|------------------------|
| Amenities | See Remarks |
| Parking | Triple Garage Attached |

Interior

| | |
|-------------------|---------------------------------------|
| Interior Features | ensuite bathroom |
| Appliances | See Remarks, Builder Appliance Credit |
| Heating | Forced Air-1, Natural Gas |
| Stories | 2 |
| Has Basement | Yes |
| Basement | Full, Unfinished |

Exterior

| | |
|-------------------|----------------------------------|
| Exterior | Wood, Metal, Hardie Board Siding |
| Exterior Features | See Remarks |
| Roof | Asphalt Shingles |
| Construction | Wood, Metal, Hardie Board Siding |
| Foundation | Concrete Perimeter |

Additional Information

| | |
|----------------|---------------------|
| Date Listed | February 11th, 2025 |
| Days on Market | 101 |
| Zoning | Zone 58 |

DATA IS DEEMED RELIABLE BUT IS NOT GUARANTEED ACCURATE BY THE REALTORS® ASSOCIATION OF

EDMONTON. COPYRIGHT 2025 BY THE REALTORS® ASSOCIATION OF EDMONTON. ALL RIGHTS RESERVED.Trademarks are owned or controlled by the Canadian Real Estate Association (CREA) and identify real estate professionals who are members of CREA (REALTOR®, REALTORS®) and/or the quality of services they provide (MLS®, Multiple Listing Service®)

Listing information last updated on May 23rd, 2025 at 1:32pm MDT