

\$369,999 - 11738 86 Street, Edmonton

MLS® #E4432358

\$369,999

4 Bedroom, 2.00 Bathroom, 1,106 sqft

Single Family on 0.00 Acres

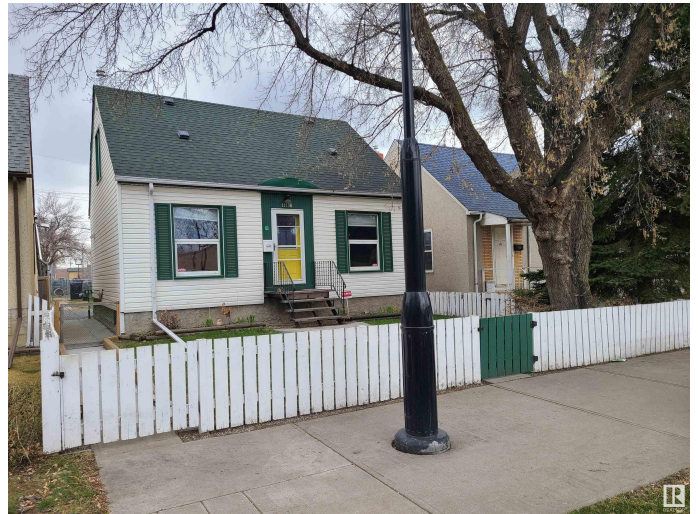
Parkdale (Edmonton), Edmonton, AB

RENOVATIONS GALORE!! School at the end of the block!! VERY well kept, 4-BEDROOM home with a SEPARATE ENTRANCE to a fully equipped 1 bedroom suite featuring a 2ND KITCHEN, Updated full bath & good sized living room. The main floor includes an updated bath and kitchen with NEW stainless steel appliances!! Major updates: CENTRAL A/C (2017), shingles on home & garage (2017), chimney (2020), Previously upgraded furnace, HWT, siding, windows, and 100 amp electrical service. Step outside to a large, fully fenced yard complete with a garden and an extra storage shed. The insulated, over-sized single garage offers great storage, a garage door opener as well as extra parking on the outside—perfect for a large truck, extra vehicles or guests. A solid, move-in-ready home with over 1700 sqft of living space and tons of potential!!

Built in 1943

Essential Information

MLS® #	E4432358
Price	\$369,999
Bedrooms	4
Bathrooms	2.00
Full Baths	2
Square Footage	1,106



Acres	0.00
Year Built	1943
Type	Single Family
Sub-Type	Detached Single Family
Style	2 Storey
Status	Active

Community Information

Address	11738 86 Street
Area	Edmonton
Subdivision	Parkdale (Edmonton)
City	Edmonton
County	ALBERTA
Province	AB
Postal Code	T5B 3J8

Amenities

Amenities	Air Conditioner, Deck, Parking-Extra
Parking	Rear Drive Access, Single Garage Detached, See Remarks

Interior

Appliances	Dishwasher-Built-In, Dryer, Freezer, Microwave Hood Fan, Stove-Electric, Stove-Gas, Washer, Refrigerators-Two
Heating	Forced Air-1, Natural Gas
Stories	3
Has Suite	Yes
Has Basement	Yes
Basement	Full, Finished

Exterior

Exterior	Wood, Stucco
Exterior Features	Back Lane, Commercial, Fenced, Landscaped, Level Land, Schools, Shopping Nearby, Vegetable Garden
Roof	Asphalt Shingles
Construction	Wood, Stucco
Foundation	Concrete Perimeter

Additional Information

Date Listed	April 23rd, 2025
-------------	------------------

Days on Market 10

Zoning Zone 05

DATA IS DEEMED RELIABLE BUT IS NOT GUARANTEED ACCURATE BY THE REALTORS® ASSOCIATION OF EDMONTON. COPYRIGHT 2025 BY THE REALTORS® ASSOCIATION OF EDMONTON. ALL RIGHTS RESERVED. Trademarks are owned or controlled by the Canadian Real Estate Association (CREA) and identify real estate professionals who are members of CREA (REALTOR®, REALTORS®) and/or the quality of services they provide (MLS®, Multiple Listing Service®)

Listing information last updated on May 3rd, 2025 at 3:47pm MDT