

## \$129,900 - 302 1620 48 St, Edmonton

MLS® #E4432628

**\$129,900**

2 Bedroom, 1.00 Bathroom, 878 sqft

Condo / Townhouse on 0.00 Acres

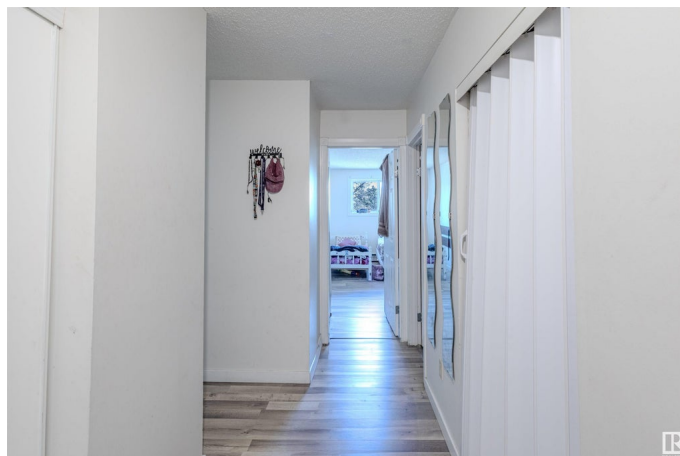
Pollard Meadows, Edmonton, AB

Welcome to Mill woods Terrace! Located in the family friendly community of Pollard Meadows this 3rd floor condo unit of a LOW-RISE CONDO CONVERSION boasts 958+ Sq ft. of living space offering privacy & tranquility. As you step inside, you're greeted by a spacious hallway & bright & inviting living space that seamlessly blends modern design & comfort, featuring large windows allowing natural light in & offering panoramic views of the complex. Adjacent to the dining area is the spacious kitchen w/ ample cabinet space & breakfast bar! This amazing unit also features 2 spacious bedrooms, a hallway storage closet & FULL SIZE BALCONY! Amenities in the building include ON-SITE MANAGEMENT, ELEVATOR & LARGE, CLEAN LAUNDRY FACILITIES ON EACH FLOOR! Close to schools, shopping, restaurants & directly on the ETS bus route! Perfect for first-time investors & first-time home buyer!

Built in 1981

### Essential Information

MLS® #	E4432628
Price	\$129,900
Bedrooms	2
Bathrooms	1.00
Full Baths	1



Square Footage	878
Acres	0.00
Year Built	1981
Type	Condo / Townhouse
Sub-Type	Lowrise Apartment
Style	Single Level Apartment
Status	Active

### Community Information

Address	302 1620 48 St
Area	Edmonton
Subdivision	Pollard Meadows
City	Edmonton
County	ALBERTA
Province	AB
Postal Code	T6L 5P1

### Amenities

Amenities	No Animal Home, No Smoking Home, See Remarks
Parking	Stall

### Interior

Appliances	Dishwasher - Energy Star, Refrigerator, Stove-Electric
Heating	Baseboard, Natural Gas
# of Stories	4
Stories	1
Has Basement	Yes
Basement	None, No Basement

### Exterior

Exterior	Wood
Exterior Features	Paved Lane, Public Transportation, Schools, Shopping Nearby
Roof	Asphalt Shingles
Construction	Wood
Foundation	Concrete Perimeter

### Additional Information

Date Listed	April 24th, 2025
Days on Market	64

Zoning	Zone 29
Condo Fee	\$504

DATA IS DEEMED RELIABLE BUT IS NOT GUARANTEED ACCURATE BY THE REALTORS® ASSOCIATION OF EDMONTON. COPYRIGHT 2025 BY THE REALTORS® ASSOCIATION OF EDMONTON. ALL RIGHTS RESERVED. Trademarks are owned or controlled by the Canadian Real Estate Association (CREA) and identify real estate professionals who are members of CREA (REALTOR®, REALTORS®) and/or the quality of services they provide (MLS®, Multiple Listing Service®)

Listing information last updated on June 27th, 2025 at 5:47pm MDT