

## **\$535,000 - 8936 153 Street, Edmonton**

---

MLS® #E4433272

**\$535,000**

3 Bedroom, 2.00 Bathroom, 917 sqft

Single Family on 0.00 Acres

Jasper Park, Edmonton, AB

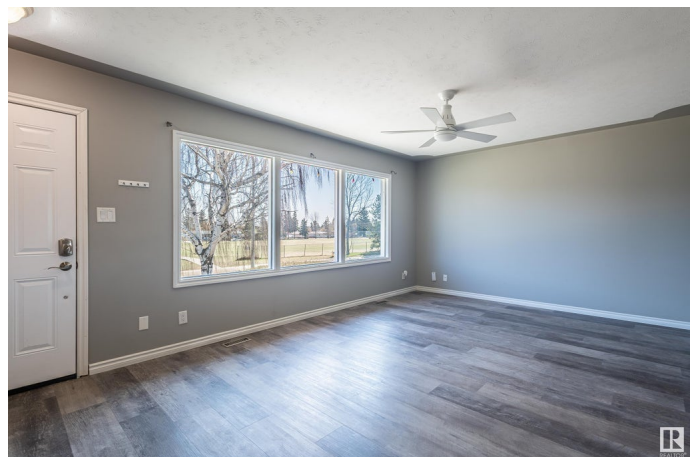
LEGAL BASEMENT SUITE. Welcome this to this 3 bedroom bungalow located in a quiet neighborhood right across from a school! This home is a rare find. The 27' x 28' oversized double garage is insulated, heated, and paired with a large shed for even more storage. There's also a chain-link fence with a gate leading into the west-facing backyard – perfect for storing a boat, trailer, or extra toys! Inside, the home is bright and cheery with a great layout, an updated kitchen featuring quartz countertops, an undermount double sink, and stainless steel appliances. The renovated main bathroom includes quartz counters, a large soaker tub, and a stylish tile surround. Downstairs, the suite has its own kitchen, living room, spacious bedroom, and bathroom – ideal for extra income or extended family. Two separate furnaces and relatively new shingles add even more value and peace of mind. An amazing buy for investors, first-time buyers, or anyone wanting more space and opportunity! Some photos virtually staged.

Built in 1958

### **Essential Information**

MLS® # E4433272

Price \$535,000



|                |                        |
|----------------|------------------------|
| Bedrooms       | 3                      |
| Bathrooms      | 2.00                   |
| Full Baths     | 2                      |
| Square Footage | 917                    |
| Acres          | 0.00                   |
| Year Built     | 1958                   |
| Type           | Single Family          |
| Sub-Type       | Detached Single Family |
| Style          | Bungalow               |
| Status         | Active                 |

### Community Information

|             |                 |
|-------------|-----------------|
| Address     | 8936 153 Street |
| Area        | Edmonton        |
| Subdivision | Jasper Park     |
| City        | Edmonton        |
| County      | ALBERTA         |
| Province    | AB              |
| Postal Code | T6E 0S9         |

### Amenities

|           |                                    |
|-----------|------------------------------------|
| Amenities | See Remarks                        |
| Parking   | Double Garage Detached, Over Sized |

### Interior

|              |  |
|--------------|--|
| Appliances   | Dishwasher-Built-In, Dryer, Fan-Ceiling, Hood Fan, Microwave Hood Fan, Washer, Refrigerators-Two, Stoves-Two |
| Heating      | Forced Air-2, Natural Gas  |
| Stories      | 2  |
| Has Suite    | Yes  |
| Has Basement | Yes  |
| Basement     | Full, Finished   |

### Exterior

|                   |  |
|-------------------|--|
| Exterior          | Wood, Vinyl                                  |
| Exterior Features | Fenced, Landscaped, Schools, Shopping Nearby |
| Roof              | Asphalt Shingles                             |
| Construction      | Wood, Vinyl                                  |
| Foundation        | Concrete Perimeter                           |

**School Information**

|            |                      |
|------------|----------------------|
| Elementary | James Gibbons School |
| Middle     | Stratford School     |
| High       | Jasper Place School  |

**Additional Information**

|                |                  |
|----------------|------------------|
| Date Listed    | April 28th, 2025 |
| Days on Market | 5                |
| Zoning         | Zone 22          |

DATA IS DEEMED RELIABLE BUT IS NOT GUARANTEED ACCURATE BY THE REALTORS® ASSOCIATION OF EDMONTON. COPYRIGHT 2025 BY THE REALTORS® ASSOCIATION OF EDMONTON. ALL RIGHTS RESERVED.Trademarks are owned or controlled by the Canadian Real Estate Association (CREA) and identify real estate professionals who are members of CREA (REALTOR®, REALTORS®) and/or the quality of services they provide (MLS®, Multiple Listing Service®)

Listing information last updated on May 3rd, 2025 at 10:47am MDT