

\$389,900 - 27 Douglas Lane, Leduc

MLS® #E4433550

\$389,900

3 Bedroom, 3.00 Bathroom, 1,390 sqft

Single Family on 0.00 Acres

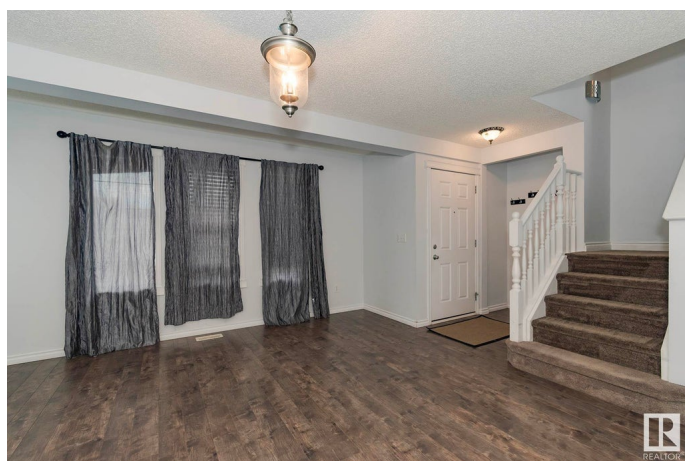
Tribute, Leduc, AB

Affordable & Fully Finished with Oversized Heated Garage! Tucked away in a quiet Leduc neighbourhood near parks and schools, this fully finished 3-bedroom home has a lot to offer and is a perfect choice for first-time home buyers. Enjoy a spacious main floor with a huge living room, sunny bay window dining area, and a massive kitchen featuring honey oak cabinetry, stainless steel appliances, and tons of storage. A convenient half bath completes the main level. Upstairs you'll find a large master suite with full ensuite, two more generous sized bedrooms, and another full bathroom. The fully finished basement includes a huge family room ideal for movie nights, a second half bath, laundry and loads of storage. Step outside to a large south-facing deck, private and perfect for sunny afternoons. Huge bonus is an oversized heated double garage with rear lane access! Great value in a great location.

Built in 2005

Essential Information

MLS® #	E4433550
Price	\$389,900
Bedrooms	3
Bathrooms	3.00
Full Baths	2



Half Baths	2
Square Footage	1,390
Acres	0.00
Year Built	2005
Type	Single Family
Sub-Type	Detached Single Family
Style	2 Storey
Status	Active

Community Information

Address	27 Douglas Lane
Area	Leduc
Subdivision	Tribute
City	Leduc
County	ALBERTA
Province	AB
Postal Code	T9E 8P5

Amenities

Amenities	Deck, Vinyl Windows
Parking	Double Garage Detached

Interior

Interior Features	ensuite bathroom
Appliances	Dishwasher-Built-In, Dryer, Garage Control, Garage Opener, Microwave Hood Fan, Refrigerator, Stove-Electric, Washer, Window Coverings
Heating	Forced Air-1, Natural Gas
Stories	3
Has Basement	Yes
Basement	Full, Finished

Exterior

Exterior	Wood, Vinyl
Exterior Features	Airport Nearby, Fenced, Playground Nearby, Public Swimming Pool, Public Transportation, Schools, Shopping Nearby
Roof	Asphalt Shingles
Construction	Wood, Vinyl
Foundation	Concrete Perimeter

Additional Information

Date Listed May 1st, 2025

Days on Market 2

Zoning Zone 81

DATA IS DEEMED RELIABLE BUT IS NOT GUARANTEED ACCURATE BY THE REALTORS® ASSOCIATION OF EDMONTON. COPYRIGHT 2025 BY THE REALTORS® ASSOCIATION OF EDMONTON. ALL RIGHTS RESERVED. Trademarks are owned or controlled by the Canadian Real Estate Association (CREA) and identify real estate professionals who are members of CREA (REALTOR®, REALTORS®) and/or the quality of services they provide (MLS®, Multiple Listing Service®)

Listing information last updated on May 3rd, 2025 at 2:32pm MDT