

Courtesy Of Thomas B Scott Of RE/MAX River City

\$499,900 - 8607 10 Avenue, Edmonton

MLS® #E4434004

\$499,900

4 Bedroom, 3.00 Bathroom, 1,259 sqft

Single Family on 0.00 Acres

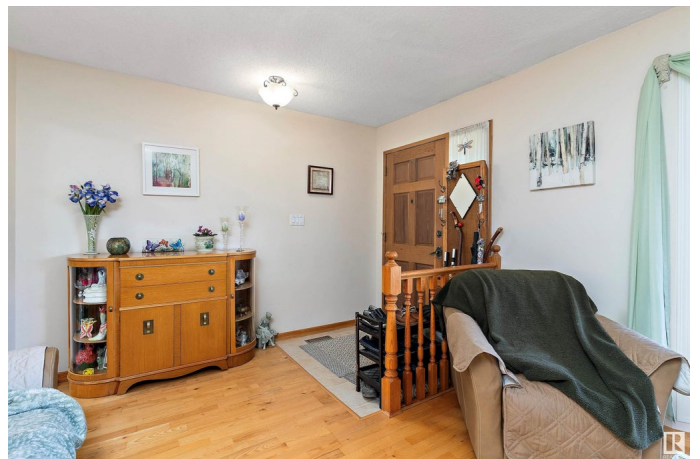
Satoo, Edmonton, AB

Beautifully maintained bungalow with a backyard oasis in quiet, family-friendly Satoo! Backing onto a greenbelt and off-leash park, this home offers over 2,360 sq. ft. of finished space with 4 bedrooms, 3 full baths, and countless upgrades. The bright main floor features a spacious living room with gas fireplace, formal dining area, and a stunning renovated kitchen with breakfast nook and access to a large composite deck. Enjoy the HUGE south-facing yard with mature trees, fire pit, and no rear neighbours! The primary suite includes a walk-in closet and 4-pc ensuite, with two more generous bedrooms and a full bath completing the main level. The fully finished basement is perfect for entertaining, with a large rec room, built-in bar, second fireplace, fourth bedroom, full bath, and cold room. Updates include windows, shingles, HWT, hardwood and vinyl flooring. Move-in ready and truly a must-see!

Built in 1975

Essential Information

MLS® #	E4434004
Price	\$499,900
Bedrooms	4
Bathrooms	3.00
Full Baths	3



Square Footage	1,259
Acres	0.00
Year Built	1975
Type	Single Family
Sub-Type	Detached Single Family
Style	Bungalow
Status	Active

Community Information

Address	8607 10 Avenue
Area	Edmonton
Subdivision	Satoo
City	Edmonton
County	ALBERTA
Province	AB
Postal Code	T6K 1W9

Amenities

Amenities	Bar, Closet Organizers, Deck, Fire Pit, Hot Water Natural Gas, Vinyl Windows, See Remarks
Parking Spaces	4
Parking	Double Garage Attached

Interior

Interior Features	ensuite bathroom
Appliances	Alarm/Security System, Dishwasher-Built-In, Dryer, Garage Control, Garage Opener, Microwave Hood Fan, Refrigerator, Storage Shed, Stove-Electric, Washer, Window Coverings
Heating	Forced Air-1, Natural Gas
Fireplace	Yes
Fireplaces	Stone Facing
Stories	2
Has Basement	Yes
Basement	Full, Finished

Exterior

Exterior	Wood, Brick, Stucco
Exterior Features	Airport Nearby, Backs Onto Park/Trees, Fenced, Golf Nearby, Landscaped, Playground Nearby, Private Setting, Public Swimming Pool, Public Transportation, Schools, Shopping Nearby, See Remarks

Roof	Asphalt Shingles
Construction	Wood, Brick, Stucco
Foundation	Concrete Perimeter

Additional Information

Date Listed	May 2nd, 2025
Days on Market	5
Zoning	Zone 29

DATA IS DEEMED RELIABLE BUT IS NOT GUARANTEED ACCURATE BY THE REALTORS® ASSOCIATION OF EDMONTON. COPYRIGHT 2025 BY THE REALTORS® ASSOCIATION OF EDMONTON. ALL RIGHTS RESERVED.Trademarks are owned or controlled by the Canadian Real Estate Association (CREA) and identify real estate professionals who are members of CREA (REALTOR®, REALTORS®) and/or the quality of services they provide (MLS®, Multiple Listing Service®)

Listing information last updated on May 7th, 2025 at 1:47am MDT