

## \$624,900 - 19 Oakpark Crescent, St. Albert

MLS® #E4434057

**\$624,900**

3 Bedroom, 2.50 Bathroom, 1,294 sqft

Single Family on 0.00 Acres

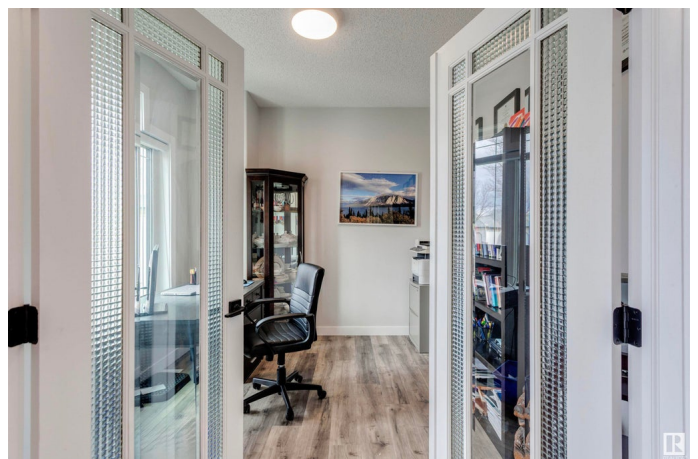
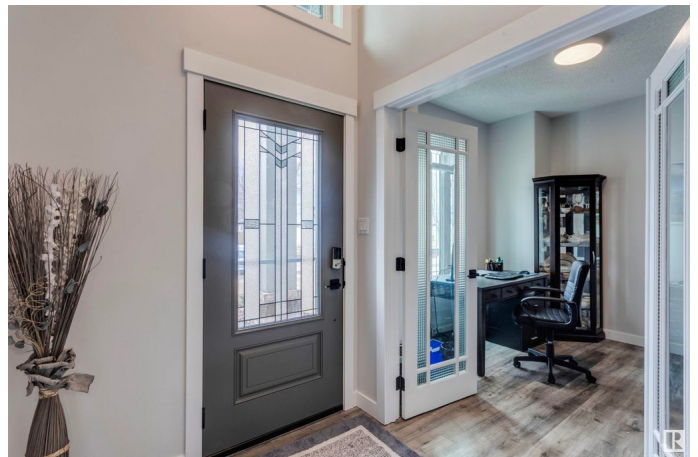
Oakmont, St. Albert, AB

Set in the heart of Oakmont, this turnkey bungalow is perfectly positioned near the Shops of Boudreau and surrounded by walking trails and treed pathways. Morning walks along the Sturgeon, coffee on the deck, or quiet evenings in the fully fenced yard, it all feels easy here. Inside, a bright and welcoming layout makes everyday living feel effortless, with a crisp white kitchen that opens to the living area and carries out to a sunny, east-facing deck and backyard. The main floor features a private office with large windows, laundry room with a sink, double attached garage, and a generous primary suite with a five-piece ensuite. A fully finished basement offers even more space to stretch out and make your own. Whether you're strolling to the Botanic Park, skating at the local rink, or simply enjoying the stillness of home, this is a place where comfort and community come together beautifully.

Built in 1996

### Essential Information

MLS® #	E4434057
Price	\$624,900
Bedrooms	3
Bathrooms	2.50
Full Baths	2



Half Baths	1
Square Footage	1,294
Acres	0.00
Year Built	1996
Type	Single Family
Sub-Type	Detached Single Family
Style	Bungalow
Status	Active

### **Community Information**

Address	19 Oakpark Crescent
Area	St. Albert
Subdivision	Oakmont
City	St. Albert
County	ALBERTA
Province	AB
Postal Code	T8N 6L2

### **Amenities**

Amenities	Air Conditioner, Deck
Parking Spaces	4
Parking	Double Garage Attached

### **Interior**

Interior Features	ensuite bathroom
Appliances	Dishwasher-Built-In, Dryer, Garage Control, Garage Opener, Hood Fan, Refrigerator, Stove-Electric, Washer, Wine/Beverage Cooler
Heating	Forced Air-1, Natural Gas
Fireplace	Yes
Fireplaces	Glass Door, Marble Surround
Stories	2
Has Basement	Yes
Basement	Full, Finished

### **Exterior**

Exterior	Wood, Stone, Vinyl
Exterior Features	Fenced, Flat Site, Landscaped, No Back Lane, Playground Nearby, Public Transportation, Shopping Nearby
Roof	Asphalt Shingles

Construction	Wood, Stone, Vinyl
Foundation	Concrete Perimeter

**Additional Information**

Date Listed	May 2nd, 2025
Days on Market	2
Zoning	Zone 24

DATA IS DEEMED RELIABLE BUT IS NOT GUARANTEED ACCURATE BY THE REALTORS® ASSOCIATION OF EDMONTON. COPYRIGHT 2025 BY THE REALTORS® ASSOCIATION OF EDMONTON. ALL RIGHTS RESERVED.Trademarks are owned or controlled by the Canadian Real Estate Association (CREA) and identify real estate professionals who are members of CREA (REALTOR®, REALTORS®) and/or the quality of services they provide (MLS®, Multiple Listing Service®)

Listing information last updated on May 3rd, 2025 at 10:02pm MDT