

\$349,000 - 83 1428 Hodgson Way, Edmonton

MLS® #E4435410

\$349,000

3 Bedroom, 2.50 Bathroom, 1,286 sqft
Condo / Townhouse on 0.00 Acres

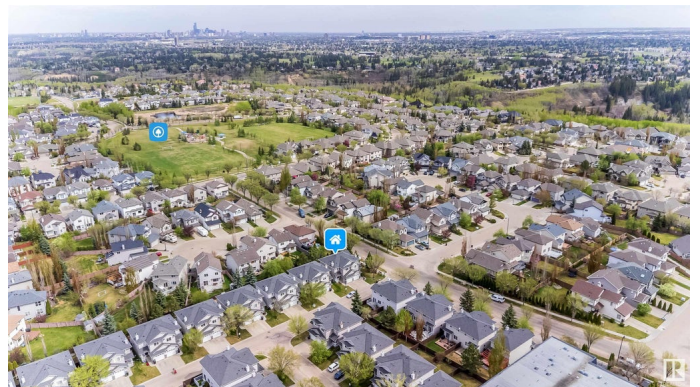
Hodgson, Edmonton, AB

Welcome to the charming community of Hodgson! This freshly painted 3-bedroom, 2.5-bath half duplex in Whitemud Terrace offers comfort, style, and convenience. Recent updates include some new lighting fixtures and newer stainless steel appliances in a bright kitchen with white cabinetry and granite island. Enjoy gatherings on the newer wooden deck in your fenced, low-maintenance yard. The main floor features easy-care laminate, while upstairs you'll find three spacious bedrooms, including a primary suite with a double closet and private ensuite. The basement is unfinished and ready for your ideas. Situated close to parks, shopping, public transit, and more in this well maintained complex with low condo fees. A perfect fit for first-time buyers or savvy investors!

Built in 2005

Essential Information

MLS® #	E4435410
Price	\$349,000
Bedrooms	3
Bathrooms	2.50
Full Baths	2
Half Baths	1
Square Footage	1,286
Acres	0.00



Year Built	2005
Type	Condo / Townhouse
Sub-Type	Half Duplex
Style	2 Storey
Status	Active

Community Information

Address	83 1428 Hodgson Way
Area	Edmonton
Subdivision	Hodgson
City	Edmonton
County	ALBERTA
Province	AB
Postal Code	T6R 3P8

Amenities

Amenities	Deck, Detectors Smoke, No Smoking Home, See Remarks
Parking	Single Garage Attached

Interior

Interior Features	ensuite bathroom
Appliances	Dishwasher-Built-In, Dryer, Garage Control, Garage Opener, Hood Fan, Oven-Microwave, Refrigerator, Stove-Electric, Washer, Window Coverings
Heating	Forced Air-1, Natural Gas
Stories	2
Has Basement	Yes
Basement	Full, Unfinished

Exterior

Exterior	Wood, Vinyl
Exterior Features	Fenced, Golf Nearby, Playground Nearby, Public Transportation
Roof	Asphalt Shingles
Construction	Wood, Vinyl
Foundation	Concrete Perimeter

Additional Information

Date Listed	May 9th, 2025
Days on Market	9

Zoning	Zone 14
HOA Fees	92
HOA Fees Freq.	Annually
Condo Fee	\$161

DATA IS DEEMED RELIABLE BUT IS NOT GUARANTEED ACCURATE BY THE REALTORS® ASSOCIATION OF EDMONTON. COPYRIGHT 2025 BY THE REALTORS® ASSOCIATION OF EDMONTON. ALL RIGHTS RESERVED. Trademarks are owned or controlled by the Canadian Real Estate Association (CREA) and identify real estate professionals who are members of CREA (REALTOR®, REALTORS®) and/or the quality of services they provide (MLS®, Multiple Listing Service®)

Listing information last updated on May 17th, 2025 at 11:47pm MDT