

\$698,800 - 318 Hilliard Close, Edmonton

MLS® #E4436929

\$698,800

4 Bedroom, 3.50 Bathroom, 2,152 sqft

Single Family on 0.00 Acres

Hodgson, Edmonton, AB

Welcome to the desired comm. of Hodgson in South Edmonton, situated at the END of a quiet CUL-DE-SAC & very private. This beautiful home c/w 4 bdrms, 3.5 baths, FULLY finished basement & the main flr features flex rm and a gorgeous open-concept main flr w/skylights in the fam rm. The kitchen offers exotic granite counters, undermount sink, tile backsplash, SS appls, WALKTHROUGH PANTRY, and an ISLAND w/EATING BAR! A family-sized dining & living rm is perfect for entertaining guests. Upstairs you'll FALL IN LOVE w/the LG BONUS RM—ideal as a sitting area or playrm and a KING-SIZED PRIMARY BDRM w/ensuite, HIS & HERS sinks, LG shower, & W/I closet. Two more good-sized bdrms & a full bath. Situated on a LG pie-shaped lot (6,610 sq.ft.), enjoy a fully fenced & landscaped yard w/LG DECK w/gas line for BBQ, & DBL oversized double attached GARAGE! Ideally located near parks, shopping, golf, rec center, U of A & all other amenities. STOP waiting, START living!

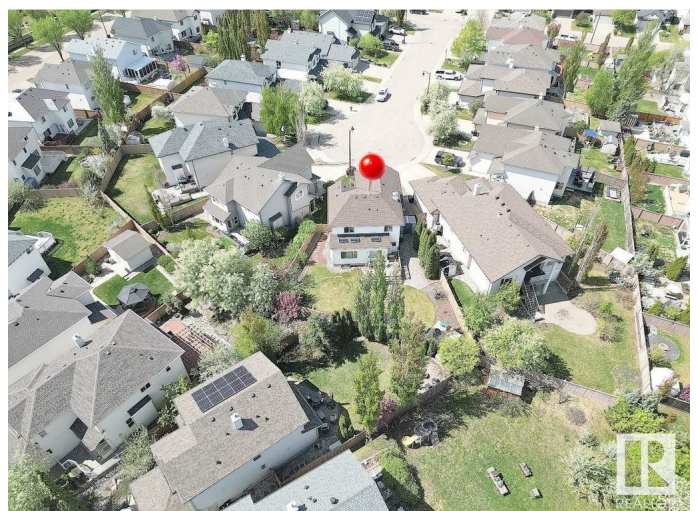
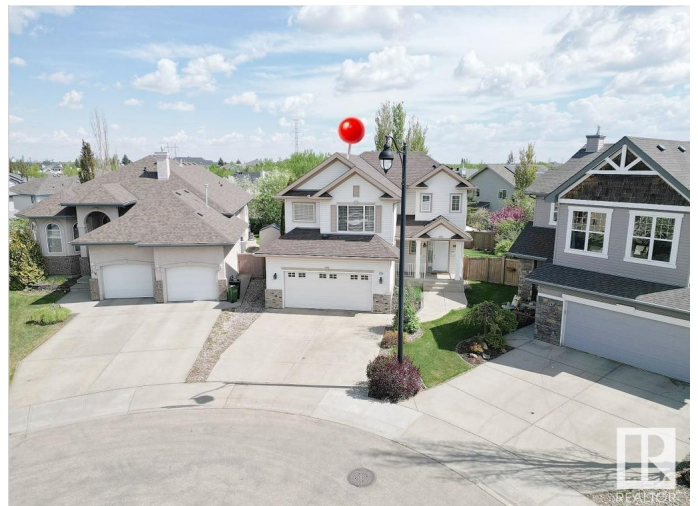
Built in 2004

Essential Information

MLS® # E4436929

Price \$698,800

Bedrooms 4



Bathrooms	3.50
Full Baths	3
Half Baths	1
Square Footage	2,152
Acres	0.00
Year Built	2004
Type	Single Family
Sub-Type	Detached Single Family
Style	2 Storey
Status	Active

Community Information

Address	318 Hilliard Close
Area	Edmonton
Subdivision	Hodgson
City	Edmonton
County	ALBERTA
Province	AB
Postal Code	T6R 3G4

Amenities

Amenities	Air Conditioner, Ceiling 9 ft., No Animal Home, No Smoking Home
Parking	Double Garage Attached

Interior

Interior Features	ensuite bathroom
Appliances	Air Conditioning-Central, Dishwasher-Built-In, Dryer, Garage Opener, Hood Fan, Refrigerator, Stove-Electric, Washer, Window Coverings
Heating	Forced Air-1, Natural Gas
Stories	3
Has Basement	Yes
Basement	Full, Finished

Exterior

Exterior	Wood, Brick, Vinyl
Exterior Features	Cul-De-Sac, Flat Site, Landscaped, No Back Lane, Playground Nearby, Public Transportation, Schools, Shopping Nearby
Lot Description	28'.2"x92'.5"
Roof	Asphalt Shingles

Construction	Wood, Brick, Vinyl
Foundation	Concrete Perimeter

Additional Information

Date Listed	May 16th, 2025
Days on Market	1
Zoning	Zone 14
HOA Fees	175
HOA Fees Freq.	Annually

DATA IS DEEMED RELIABLE BUT IS NOT GUARANTEED ACCURATE BY THE REALTORS® ASSOCIATION OF EDMONTON. COPYRIGHT 2025 BY THE REALTORS® ASSOCIATION OF EDMONTON. ALL RIGHTS RESERVED.Trademarks are owned or controlled by the Canadian Real Estate Association (CREA) and identify real estate professionals who are members of CREA (REALTOR®, REALTORS®) and/or the quality of services they provide (MLS®, Multiple Listing Service®)

Listing information last updated on May 17th, 2025 at 7:02pm MDT