

\$145,000 - 201 10524 29 Avenue, Edmonton

MLS® #E4436967

\$145,000

2 Bedroom, 1.00 Bathroom, 1,039 sqft

Condo / Townhouse on 0.00 Acres

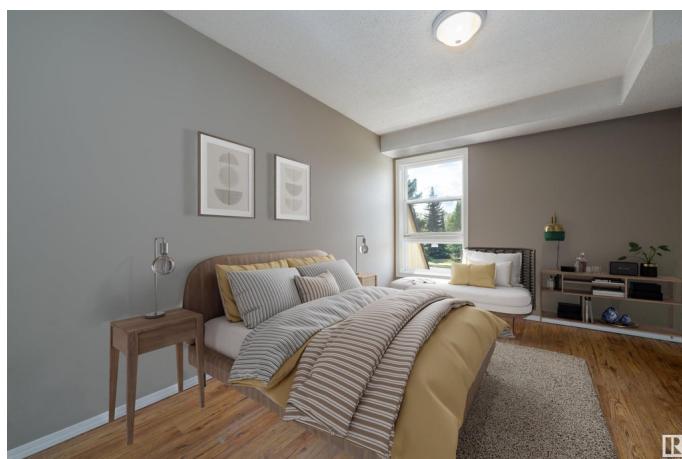
Ermineskin, Edmonton, AB

Bright, spacious, and steps from the LRT—this 2-bedroom condo offers over 1,000 sq. ft. of comfort and convenience. Enjoy stunning south-facing views of parkland, a freshly painted interior, and a layout that includes a large foyer, formal dining area, and cozy living room. The sunlit balcony, generous storage space, and big windows throughout create a warm, inviting atmosphere. All of this just 10 minutes to the University of Alberta and 15 minutes to downtown, with shopping, transit, parks, and the YMCA all nearby. A must-see!

Built in 1978

Essential Information

MLS® #	E4436967
Price	\$145,000
Bedrooms	2
Bathrooms	1.00
Full Baths	1
Square Footage	1,039
Acres	0.00
Year Built	1978
Type	Condo / Townhouse
Sub-Type	Lowrise Apartment
Style	Multi Level Apartment
Status	Active



Community Information

Address	201 10524 29 Avenue
Area	Edmonton
Subdivision	Ermineskin
City	Edmonton
County	ALBERTA
Province	AB
Postal Code	T6J 4J2

Amenities

Amenities	No Smoking Home, Storage-In-Suite
Parking	Stall

Interior

Appliances	Dishwasher-Built-In, Hood Fan, Refrigerator, Stove-Electric
Heating	Forced Air-1, Natural Gas
# of Stories	3
Stories	3
Has Basement	Yes
Basement	None, No Basement

Exterior

Exterior	Wood, Brick
Exterior Features	Park/Reserve, Schools, Shopping Nearby
Roof	Asphalt Shingles
Construction	Wood, Brick
Foundation	Concrete Perimeter

Additional Information

Date Listed	May 16th, 2025
Days on Market	1
Zoning	Zone 16
Condo Fee	\$501

DATA IS DEEMED RELIABLE BUT IS NOT GUARANTEED ACCURATE BY THE REALTORS® ASSOCIATION OF EDMONTON. COPYRIGHT 2025 BY THE REALTORS® ASSOCIATION OF EDMONTON. ALL RIGHTS RESERVED. Trademarks are owned or controlled by the Canadian Real Estate Association (CREA) and identify real estate professionals who are members of CREA (REALTOR®, REALTORS®) and/or the quality of services they provide (MLS®, Multiple Listing Service®)

Listing information last updated on May 17th, 2025 at 1:32pm MDT