

\$585,000 - 191 Harvest Ridge Drive, Spruce Grove

MLS® #E4437728

\$585,000

3 Bedroom, 3.50 Bathroom, 1,937 sqft

Single Family on 0.00 Acres

Harvest Ridge, Spruce Grove, AB

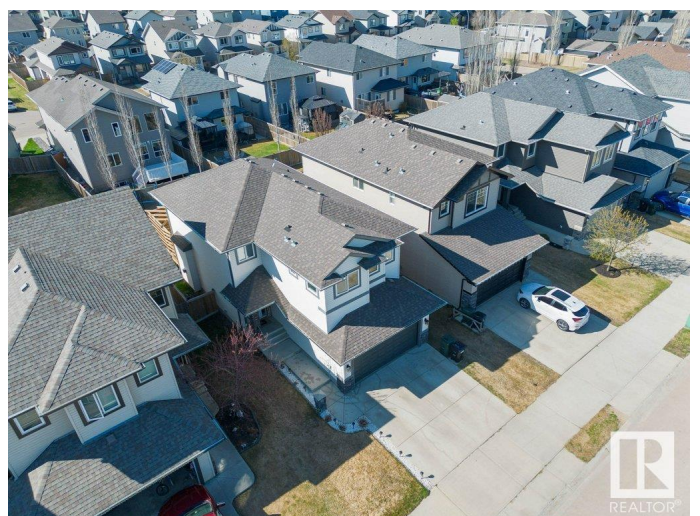
Welcome to your future home in the heart of Spruce Grove! The spacious main floor features a grand entrance, a convenient half bath, and laundry for easy living. The open concept kitchen, living, and dining areas create a warm and inviting space for gatherings. Upstairs, a second living room awaits, alongside a luxurious primary suite with a spa-like ensuite featuring a jacuzzi tub, a standalone shower, dual sinks, and a separate water closet. Two additional bedrooms and a main 4-piece bath ensure comfort for the whole family. The fully finished basement offers versatility with a rec room, full bath and potential for a 4th bedroom (the salon will be removed). Step outside to a south-exposed backyard with a huge deck, ideal for outdoor living. This home boasts upgrades like Astoria Lights on the eaves, AC for those hot summer days, no carpet throughout and a hot tub. Enjoy the convenience of being close to a playground, green space and multi-use paths. Coming home is a breeze with a double attached garage.

Built in 2012

Essential Information

MLS® # E4437728

Price \$585,000



Bedrooms	3
Bathrooms	3.50
Full Baths	3
Half Baths	1
Square Footage	1,937
Acres	0.00
Year Built	2012
Type	Single Family
Sub-Type	Detached Single Family
Style	2 Storey
Status	Active

Community Information

Address	191 Harvest Ridge Drive
Area	Spruce Grove
Subdivision	Harvest Ridge
City	Spruce Grove
County	ALBERTA
Province	AB
Postal Code	T7X 0K5

Amenities

Amenities	Deck, Gazebo, Hot Tub
Parking Spaces	4
Parking	Double Garage Attached

Interior

Interior Features	ensuite bathroom
Appliances	Dishwasher-Built-In, Garage Control, Garage Opener, Hood Fan, Oven-Microwave, Refrigerator, Stove-Electric, Hot Tub
Heating	Forced Air-1, Natural Gas
Stories	3
Has Basement	Yes
Basement	Full, Finished

Exterior

Exterior	Wood, Brick, Vinyl
Exterior Features	Fenced
Roof	Asphalt Shingles

Construction	Wood, Brick, Vinyl
Foundation	Concrete Perimeter

Additional Information

Date Listed	May 22nd, 2025
Days on Market	5
Zoning	Zone 91

DATA IS DEEMED RELIABLE BUT IS NOT GUARANTEED ACCURATE BY THE REALTORS® ASSOCIATION OF EDMONTON. COPYRIGHT 2025 BY THE REALTORS® ASSOCIATION OF EDMONTON. ALL RIGHTS RESERVED.Trademarks are owned or controlled by the Canadian Real Estate Association (CREA) and identify real estate professionals who are members of CREA (REALTOR®, REALTORS®) and/or the quality of services they provide (MLS®, Multiple Listing Service®)

Listing information last updated on May 27th, 2025 at 12:47pm MDT