

\$385,900 - 59 2710 66 Street, Edmonton

MLS® #E4438293

\$385,900

3 Bedroom, 2.50 Bathroom, 1,300 sqft

Condo / Townhouse on 0.00 Acres

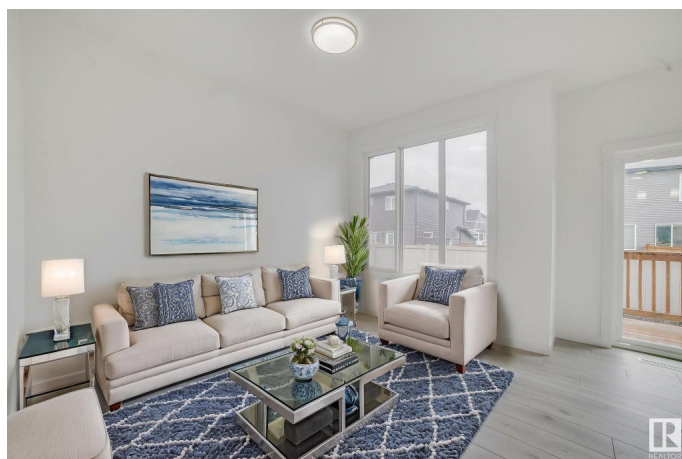
The Orchards At Ellerslie, Edmonton, AB

Welcome to this END UNIT , DOUBLE-CAR GARAGE townhouse in the sought-after community of The Orchards in South Edmonton. This stylish home features 3 bedrooms, 2.5 bathrooms, and quartz countertops throughout, offering both comfort and elegance. The main level welcomes you with a spacious front entry that flows into a modern kitchen with upgraded stainless steel appliances, and an open-concept dining and living area, complete with a two-piece bath and a rear deck perfect for relaxing. Upstairs, you'll find a large primary suite with a walk-in closet and ensuite, along with two additional well-sized bedrooms. Located in a family-friendly neighbourhood filled with parks, walking trails, and convenient shopping, this is a fantastic opportunity to own a quality home in South Edmonton with low condo fees.

Built in 2024

Essential Information

MLS® #	E4438293
Price	\$385,900
Bedrooms	3
Bathrooms	2.50
Full Baths	2
Half Baths	1
Square Footage	1,300



Acres	0.00
Year Built	2024
Type	Condo / Townhouse
Sub-Type	Townhouse
Style	2 Storey
Status	Active

Community Information

Address	59 2710 66 Street
Area	Edmonton
Subdivision	The Orchards At Ellerslie
City	Edmonton
County	ALBERTA
Province	AB
Postal Code	T6X 3H4

Amenities

Amenities	Deck, Detectors Smoke
Parking	Double Garage Attached

Interior

Interior Features	ensuite bathroom
Appliances	Dishwasher-Built-In, Dryer, Garage Control, Garage Opener, Microwave Hood Fan, Refrigerator, Stove-Electric, Washer
Heating	Forced Air-1, Natural Gas
Stories	2
Has Basement	Yes
Basement	Full, Unfinished

Exterior

Exterior	Wood, Vinyl
Exterior Features	Airport Nearby, Schools
Roof	Asphalt Shingles
Construction	Wood, Vinyl
Foundation	Concrete Perimeter

Additional Information

Date Listed	May 23rd, 2025
Days on Market	35

Zoning	Zone 53
HOA Fees	424.11
HOA Fees Freq.	Annually
Condo Fee	\$151

DATA IS DEEMED RELIABLE BUT IS NOT GUARANTEED ACCURATE BY THE REALTORS® ASSOCIATION OF EDMONTON. COPYRIGHT 2025 BY THE REALTORS® ASSOCIATION OF EDMONTON. ALL RIGHTS RESERVED. Trademarks are owned or controlled by the Canadian Real Estate Association (CREA) and identify real estate professionals who are members of CREA (REALTOR®, REALTORS®) and/or the quality of services they provide (MLS®, Multiple Listing Service®)

Listing information last updated on June 27th, 2025 at 6:17pm MDT