

# \$730,000 - 11028 84 Avenue, Edmonton

MLS® #E4440780

**\$730,000**

5 Bedroom, 3.50 Bathroom, 1,566 sqft  
Single Family on 0.00 Acres

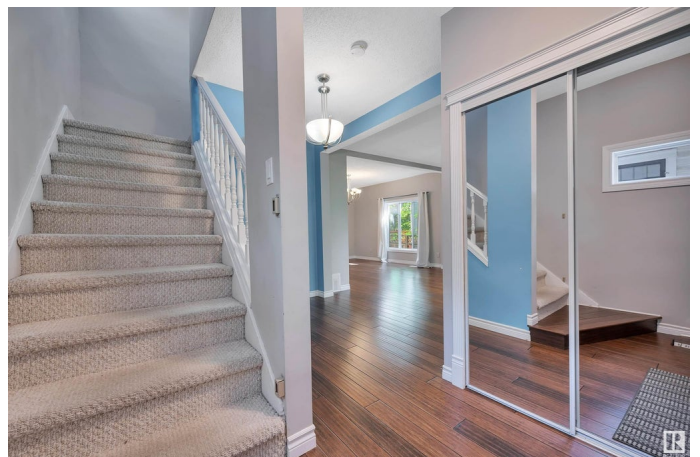
Garneau, Edmonton, AB

Charming Garneau century home offering the perfect blend of historic character and modern upgrades. This beautifully renovated two-storey features 5 bedrooms, 3.5 bathrooms, and a fully finished basement with second kitchen, laundry, and private entry. Tastefully updated with a newer roof, attic insulation, renovated ensuite, a renovated kitchen with granite counters, newer hardwood (main), upgraded plumbing, and new basement windows. The home sits on a large lot with mature trees and an unbeatable location just steps from the University of Alberta. The newer, oversized double garage adds plenty of storage and function. A rare opportunity to own a piece of Edmonton's history with the comfort of today's standards.

Built in 1914

## Essential Information

MLS® #	E4440780
Price	\$730,000
Bedrooms	5
Bathrooms	3.50
Full Baths	3
Half Baths	1
Square Footage	1,566
Acres	0.00



Year Built	1914
Type	Single Family
Sub-Type	Detached Single Family
Style	2 Storey
Status	Active

### **Community Information**

Address	11028 84 Avenue
Area	Edmonton
Subdivision	Garneau
City	Edmonton
County	ALBERTA
Province	AB
Postal Code	T6E 0V7

### **Amenities**

Amenities	Deck, Front Porch, Insulation-Upgraded, See Remarks
Parking	Double Garage Detached

### **Interior**

Interior Features	ensuite bathroom
Appliances	Dishwasher-Built-In, Microwave Hood Fan, Oven-Microwave, Window Coverings, See Remarks, Dryer-Two, Refrigerators-Two, Stoves-Two, Washers-Two
Heating	Forced Air-1, Natural Gas
Fireplace	Yes
Fireplaces	Brick Facing
Stories	3
Has Suite	Yes
Has Basement	Yes
Basement	Full, Finished

### **Exterior**

Exterior	Wood, Stucco
Exterior Features	Fenced, Playground Nearby, Public Transportation, Schools, Shopping Nearby, Treed Lot
Roof	Asphalt Shingles
Construction	Wood, Stucco
Foundation	Block

**Additional Information**

Date Listed	June 6th, 2025
Days on Market	32
Zoning	Zone 15

DATA IS DEEMED RELIABLE BUT IS NOT GUARANTEED ACCURATE BY THE REALTORS® ASSOCIATION OF EDMONTON. COPYRIGHT 2025 BY THE REALTORS® ASSOCIATION OF EDMONTON. ALL RIGHTS RESERVED.Trademarks are owned or controlled by the Canadian Real Estate Association (CREA) and identify real estate professionals who are members of CREA (REALTOR®, REALTORS®) and/or the quality of services they provide (MLS®, Multiple Listing Service®)

Listing information last updated on July 8th, 2025 at 5:32am MDT