

\$619,000 - 2023 104b Street, Edmonton

MLS® #E4441336

\$619,000

5 Bedroom, 3.50 Bathroom, 1,981 sqft
Single Family on 0.00 Acres

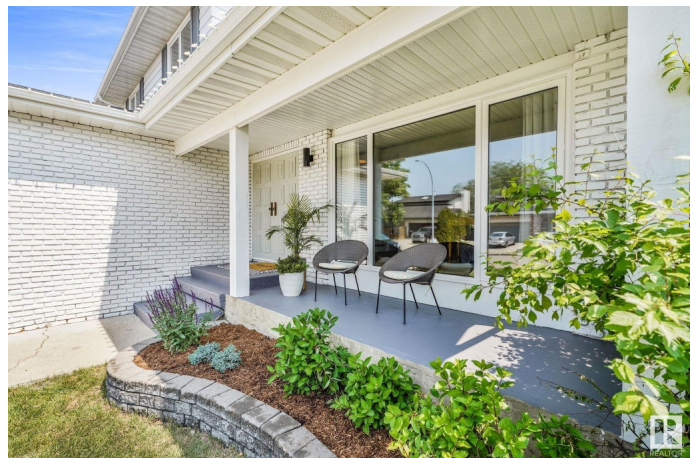
Keheewin, Edmonton, AB

Upgraded 5-bedroom home boasting many features, main floor laundry, sunken family room w/brick mantle wood burning fireplace & log lighter, 3.5 bathrooms incl. primary 3-piece ensuite. Formal dining & living rooms, spacious front entrance & kitchen, incl. all stainless-steel appliances. Basement incl. 3-piece bathroom, bedroom, recreation room, exercise/flex room, storage & cold room, maintenance room. Upgrades incl. main level & basement windows (2022), white oak plank flooring, pot lighting, high efficiency furnaces, air conditioning, alarm system, very clean and well maintained. Fully fenced large yard, fire pit, shed and rear deck with 3 season sunroom. Oversize double attached heated garage, w/entrance to house & exterior. Close to schools, parks, shopping, convenient access to transportation, quiet location, wonderful neighborhood.

Built in 1980

Essential Information

MLS® #	E4441336
Price	\$619,000
Bedrooms	5
Bathrooms	3.50
Full Baths	3
Half Baths	1



Square Footage	1,981
Acres	0.00
Year Built	1980
Type	Single Family
Sub-Type	Detached Single Family
Style	2 Storey
Status	Active

Community Information

Address	2023 104b Street
Area	Edmonton
Subdivision	Keheewin
City	Edmonton
County	ALBERTA
Province	AB
Postal Code	T6E 5E7

Amenities

Amenities	Air Conditioner, Deck, Fire Pit, Sunroom
Parking Spaces	4
Parking	Double Garage Attached, Front Drive Access, Heated, Insulated

Interior

Interior Features	ensuite bathroom
Appliances	Air Conditioning-Central, Alarm/Security System, Dishwasher-Built-In, Dryer, Fan-Ceiling, Garage Control, Garage Opener, Hood Fan, Refrigerator, Storage Shed, Stove-Electric, Washer, Window Coverings, Garage Heater
Heating	Forced Air-2, Natural Gas
Fireplace	Yes
Fireplaces	Brick Facing, Fresh Air
Stories	3
Has Basement	Yes
Basement	Full, Finished

Exterior

Exterior	Wood, Brick, Metal
Exterior Features	Fenced, Flat Site, Fruit Trees/Shrubs, Landscaped, Public Transportation, Schools, Shopping Nearby

Roof	Asphalt Shingles
Construction	Wood, Brick, Metal
Foundation	Concrete Perimeter

Additional Information

Date Listed	June 9th, 2025
Days on Market	10
Zoning	Zone 16

DATA IS DEEMED RELIABLE BUT IS NOT GUARANTEED ACCURATE BY THE REALTORS® ASSOCIATION OF EDMONTON. COPYRIGHT 2025 BY THE REALTORS® ASSOCIATION OF EDMONTON. ALL RIGHTS RESERVED.Trademarks are owned or controlled by the Canadian Real Estate Association (CREA) and identify real estate professionals who are members of CREA (REALTOR®, REALTORS®) and/or the quality of services they provide (MLS®, Multiple Listing Service®)

Listing information last updated on June 18th, 2025 at 10:02pm MDT