

\$449,000 - 18955 82 Avenue, Edmonton

MLS® #E4441603

\$449,000

3 Bedroom, 1.50 Bathroom, 1,547 sqft

Single Family on 0.00 Acres

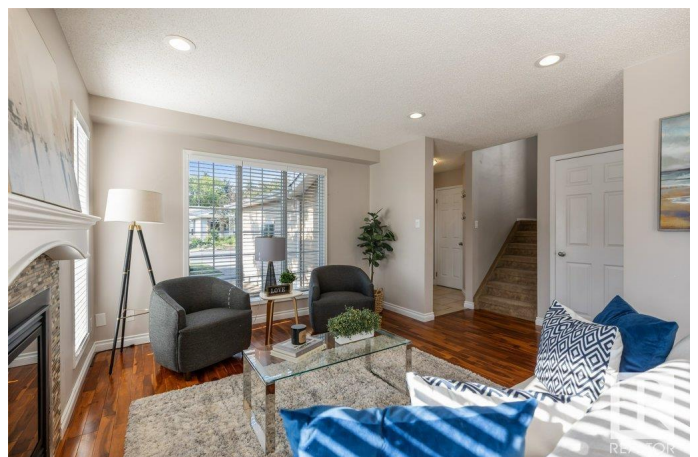
Aldergrove, Edmonton, AB

Welcome to this beautifully updated home nestled in the desirable neighbourhood of Aldergrove, backing onto a tranquil green space. Enjoy A/C, a heated double attached garage, and a sun-soaked south-facing backyard with a stone patio—perfect for entertaining. Inside, stunning Acacia hardwood floors flow throughout the main level. The spacious living/dining area features a tiled gas fireplace and opens to a modern kitchen with ample cabinetry, a large island, granite countertops, and garden doors to the yard. Upstairs offers three generous bedrooms, including a lovely primary with elegant double doors, his & hers closets, and access to the stylish main bath. The basement is partially finished with framing, drywall, and roughed-in plumbing for a future bathroom. Ideally located near parks, schools, shopping, transit, and with quick access to the Henday.

Built in 1984

Essential Information

MLS® #	E4441603
Price	\$449,000
Bedrooms	3
Bathrooms	1.50
Full Baths	1
Half Baths	1



Square Footage	1,547
Acres	0.00
Year Built	1984
Type	Single Family
Sub-Type	Detached Single Family
Style	2 Storey
Status	Active

Community Information

Address	18955 82 Avenue
Area	Edmonton
Subdivision	Aldergrove
City	Edmonton
County	ALBERTA
Province	AB
Postal Code	T5T 5C6

Amenities

Amenities	Air Conditioner, Patio, See Remarks
Parking	Double Garage Attached

Interior

Appliances	Air Conditioning-Central, Dishwasher-Built-In, Dryer, Garage Control, Garage Opener, Microwave Hood Fan, Refrigerator, Stove-Electric, Vacuum System Attachments, Vacuum Systems, Washer, Window Coverings, See Remarks, Garage Heater
Heating	Forced Air-1, Natural Gas
Stories	2
Has Basement	Yes
Basement	Full, Partially Finished

Exterior

Exterior	Wood, Brick, Vinyl
Exterior Features	Fenced, Landscaped, Playground Nearby, Public Transportation, Schools, Shopping Nearby, See Remarks
Roof	Asphalt Shingles
Construction	Wood, Brick, Vinyl
Foundation	Concrete Perimeter

Additional Information

Date Listed June 10th, 2025

Days on Market 8

Zoning Zone 20

DATA IS DEEMED RELIABLE BUT IS NOT GUARANTEED ACCURATE BY THE REALTORS® ASSOCIATION OF EDMONTON. COPYRIGHT 2025 BY THE REALTORS® ASSOCIATION OF EDMONTON. ALL RIGHTS RESERVED. Trademarks are owned or controlled by the Canadian Real Estate Association (CREA) and identify real estate professionals who are members of CREA (REALTOR®, REALTORS®) and/or the quality of services they provide (MLS®, Multiple Listing Service®)

Listing information last updated on June 18th, 2025 at 1:02am MDT