

\$599,700 - 5137 Crabapple Link, Edmonton

MLS® #E4441611

\$599,700

3 Bedroom, 2.50 Bathroom, 1,889 sqft
Single Family on 0.00 Acres

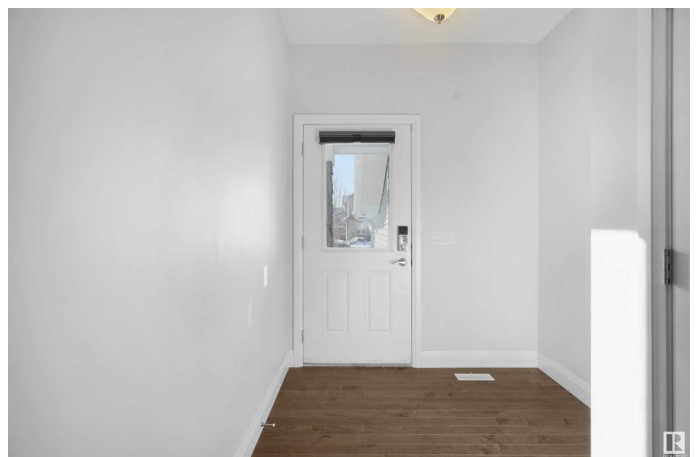
The Orchards At Ellerslie, Edmonton, AB

Immediate Possession! This JAYMAN Master Built gem offers almost 1900 sq. ft. of living space. Built on REGULAR LOT with an extended double car garage is waiting for a new family to enjoy this BRAND NEW like Home is very well maintained, BACKS ON TO PARK for additional privacy. Basement is waiting for your innovative touch. This home has ample of upgrades and quality products which are not just limited to 9' California KNOCKDOWN ceiling and premium HARDWOOD flooring is open concept gives you perfect space for gatherings with that cozy gas Fireplace. Kitchen with Inbuilt Oven and Microwave, GRANITECOUNTERTOPS & EXTENDED ISLAND. Upstairs the cozy Bonus Room has an ample of space for your media, Laundry, 3 bedrooms and 2 bathrooms including the Primary suit with luxurious soaker tub, double vanity, glass shower stall & walk-in closet. More Upgrades include, Energy Efficient Furnace, Tankless Water Heater, HRV, Triple pane windows with luxury blinds. Must SEE!!

Built in 2017

Essential Information

MLS® #	E4441611
Price	\$599,700



Bedrooms	3
Bathrooms	2.50
Full Baths	2
Half Baths	1
Square Footage	1,889
Acres	0.00
Year Built	2017
Type	Single Family
Sub-Type	Detached Single Family
Style	2 Storey
Status	Active

Community Information

Address	5137 Crabapple Link
Area	Edmonton
Subdivision	The Orchards At Ellerslie
City	Edmonton
County	ALBERTA
Province	AB
Postal Code	T6X 0X4

Amenities

Amenities	Ceiling 9 ft., Deck, Hot Water Tankless, No Animal Home, No Smoking Home, HRV System
Parking	Double Garage Attached

Interior

Interior Features	ensuite bathroom
Appliances	Dishwasher-Built-In, Dryer, Garage Opener, Oven-Built-In, Refrigerator, Stove-Gas, Washer, Window Coverings, TV Wall Mount
Heating	Forced Air-2, Natural Gas
Fireplace	Yes
Fireplaces	Brick Facing
Stories	2
Has Basement	Yes
Basement	Full, Unfinished

Exterior

Exterior	Stone, Asphalt, Brick
----------	-----------------------

Exterior Features	Airport Nearby, Backs Onto Park/Trees, Fenced, Fruit Trees/Shrubs, Landscaped, Playground Nearby, Shopping Nearby
Roof	Asphalt Shingles
Construction	Stone, Asphalt, Brick
Foundation	Concrete Perimeter

Additional Information

Date Listed	June 10th, 2025
Days on Market	73
Zoning	Zone 53
HOA Fees	450
HOA Fees Freq.	Annually

DATA IS DEEMED RELIABLE BUT IS NOT GUARANTEED ACCURATE BY THE REALTORS® ASSOCIATION OF EDMONTON. COPYRIGHT 2025 BY THE REALTORS® ASSOCIATION OF EDMONTON. ALL RIGHTS RESERVED. Trademarks are owned or controlled by the Canadian Real Estate Association (CREA) and identify real estate professionals who are members of CREA (REALTOR®, REALTORS®) and/or the quality of services they provide (MLS®, Multiple Listing Service®)

Listing information last updated on August 22nd, 2025 at 5:47am MDT