

## \$514,900 - 11443 37a Avenue, Edmonton

MLS® #E4444556

**\$514,900**

4 Bedroom, 2.00 Bathroom, 1,137 sqft

Single Family on 0.00 Acres

Greenfield, Edmonton, AB

This beautifully updated 4 bedroom, 2 bathroom bungalow offers incredible value in one of Edmonton's most sought after family communities. Thoughtfully renovated, the home features a stylish kitchen w/ custom maple cabinetry, ceramic tile flooring, modern appliances & a charming bay window overlooking the spacious backyard. The main floor boasts a living & dining area w/ gleaming hardwood floors—a perfect space for gatherings & everyday living. Downstairs, you'll find a basement w/ a cozy gas fireplace, spacious family room, laundry area, workshop & ample storage. The oversized double detached garage is a dream for hobbyists—insulated, drywalled, heated & equipped w/ 220V power. **UPDATES INCLUDE:** House Shingles 2016, Hot Water Tank 2017, Fence 2020, Furnace and A/C 2023. All of this in an unbeatable location near top-rated schools, parks, Southgate Mall, University of Alberta, transit & major roadways. This is the bungalow you've been waiting for!

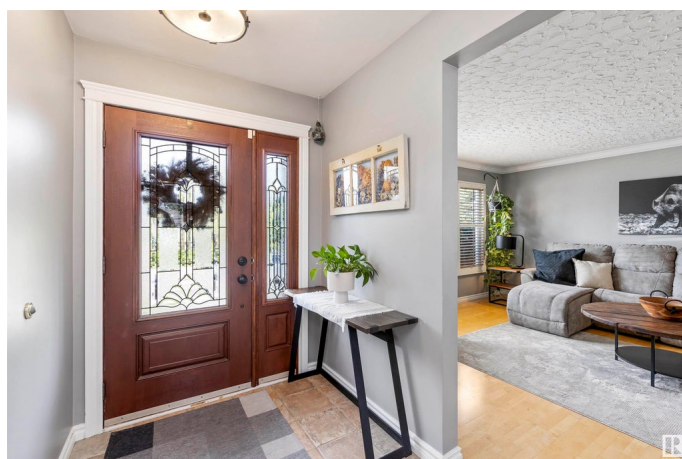
Built in 1967

### Essential Information

MLS® # E4444556

Price \$514,900

Bedrooms 4



Bathrooms	2.00
Full Baths	2
Square Footage	1,137
Acres	0.00
Year Built	1967
Type	Single Family
Sub-Type	Detached Single Family
Style	Bungalow
Status	Active

### Community Information

Address	11443 37a Avenue
Area	Edmonton
Subdivision	Greenfield
City	Edmonton
County	ALBERTA
Province	AB
Postal Code	T5J 0J6

### Amenities

Amenities	Closet Organizers, Patio, See Remarks
Parking	220 Volt Wiring, Double Garage Detached, Heated, Insulated, Over Sized

### Interior

Appliances	Air Conditioning-Central, Dryer, Garage Control, Garage Opener, Microwave Hood Fan, Refrigerator, Storage Shed, Stove-Electric, Washer, Window Coverings
Heating	Forced Air-1, Natural Gas
Fireplace	Yes
Fireplaces	Mantel
Stories	2
Has Basement	Yes
Basement	Full, Finished

### Exterior

Exterior	Wood, Stucco
Exterior Features	Back Lane, Fenced, Playground Nearby, Private Setting, Public Transportation, Schools, Shopping Nearby

Roof	Asphalt Shingles
Construction	Wood, Stucco
Foundation	Concrete Perimeter

**Additional Information**

Date Listed	June 26th, 2025
Days on Market	7
Zoning	Zone 16

DATA IS DEEMED RELIABLE BUT IS NOT GUARANTEED ACCURATE BY THE REALTORS® ASSOCIATION OF EDMONTON. COPYRIGHT 2025 BY THE REALTORS® ASSOCIATION OF EDMONTON. ALL RIGHTS RESERVED.Trademarks are owned or controlled by the Canadian Real Estate Association (CREA) and identify real estate professionals who are members of CREA (REALTOR®, REALTORS®) and/or the quality of services they provide (MLS®, Multiple Listing Service®)

Listing information last updated on July 3rd, 2025 at 10:48am MDT