

Courtesy Of Jay Lewis Of RE/MAX Excellence

\$617,000 - 50 Sereno Lane, Fort Saskatchewan

MLS® #E4445142

\$617,000

4 Bedroom, 3.00 Bathroom, 2,114 sqft

Single Family on 0.00 Acres

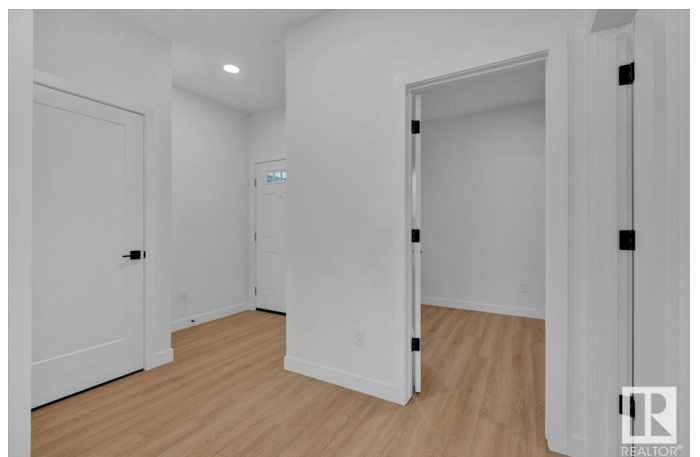
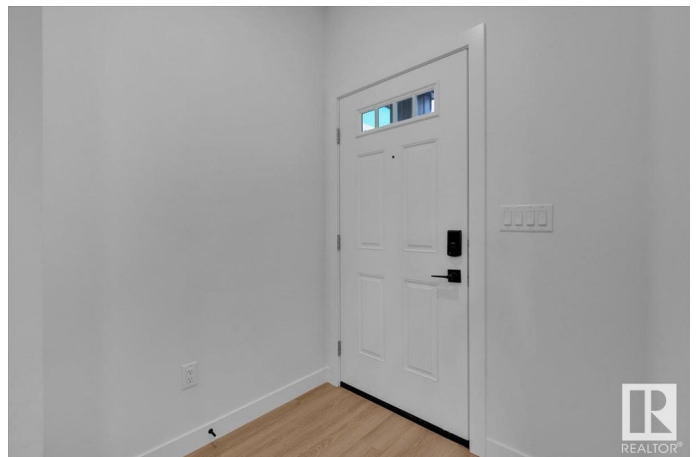
Sienna, Fort Saskatchewan, AB

5 Things to Love About This Home: 1) Main Floor Convenience – A rare main-floor bedroom and full 3pc bath with walk-in shower offers flexibility for guests or multi-generational living. 2) Stylish & Functional Design – Enjoy the open concept living area with an electric fireplace, kitchen island with breakfast bar, walk-in pantry, and a mudroom featuring built-in cubbies and bench. 3) Smart Upper Layout – Upstairs includes a bonus room, laundry, two additional bedrooms, a 4pc bath, and a spacious primary suite with walk-in closet and a luxurious 5pc ensuite with soaker tub. 4) Added Value & Potential – Features like a double attached garage with floor drain, corner lot, and a separate side entrance to the basement offer both comfort and future possibilities. 5) Prime Location – Set in Forest Ridge near parks, playgrounds, schools, and shopping – everything your family needs is just minutes away. This home blends thoughtful features with a location you'll love! *Photos are representative*

Built in 2025

Essential Information

MLS® #	E4445142
Price	\$617,000
Bedrooms	4



Bathrooms	3.00
Full Baths	3
Square Footage	2,114
Acres	0.00
Year Built	2025
Type	Single Family
Sub-Type	Detached Single Family
Style	2 Storey
Status	Active

Community Information

Address	50 Sereno Lane
Area	Fort Saskatchewan
Subdivision	Sienna
City	Fort Saskatchewan
County	ALBERTA
Province	AB
Postal Code	T8L 0Z9

Amenities

Amenities	Exterior Walls- 2"x6", No Animal Home, No Smoking Home
Parking	Double Garage Attached

Interior

Interior Features	ensuite bathroom
Appliances	Dishwasher-Built-In, Microwave Hood Fan, Refrigerator, Stove-Electric
Heating	Forced Air-1, Natural Gas
Fireplace	Yes
Fireplaces	Insert
Stories	2
Has Basement	Yes
Basement	Full, Unfinished

Exterior

Exterior	Wood, Vinyl
Exterior Features	Corner Lot, Park/Reserve, Playground Nearby, Schools, Shopping Nearby
Roof	Asphalt Shingles
Construction	Wood, Vinyl

Foundation Concrete Perimeter

Additional Information

Date Listed June 30th, 2025

Days on Market 2

Zoning Zone 62

DATA IS DEEMED RELIABLE BUT IS NOT GUARANTEED ACCURATE BY THE REALTORS® ASSOCIATION OF EDMONTON. COPYRIGHT 2025 BY THE REALTORS® ASSOCIATION OF EDMONTON. ALL RIGHTS RESERVED. Trademarks are owned or controlled by the Canadian Real Estate Association (CREA) and identify real estate professionals who are members of CREA (REALTOR®, REALTORS®) and/or the quality of services they provide (MLS®, Multiple Listing Service®)

Listing information last updated on July 2nd, 2025 at 1:02am MDT