

\$385,000 - 128 21 Summerwood Drive, Sherwood Park

MLS® #E4445627

\$385,000

3 Bedroom, 2.50 Bathroom, 1,448 sqft
Condo / Townhouse on 0.00 Acres

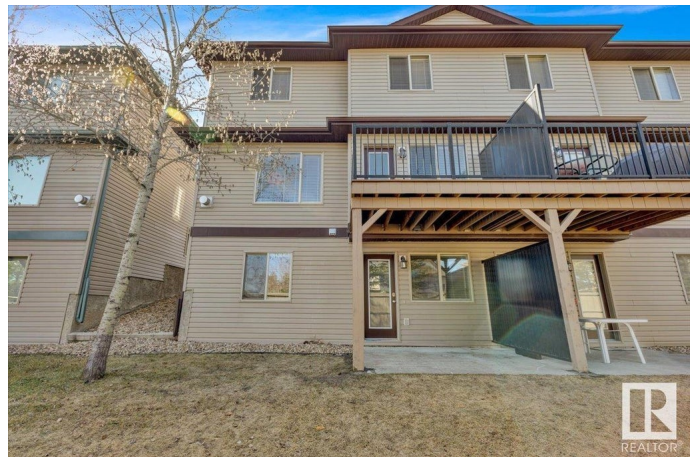
Summerwood, Sherwood Park, AB

A Rare Walkout Basement Duplex condo with separate entrance and Double Attached Garage & Recent Renovations! This spacious 3-bedroom, 2.5-bath home has a bright, open-concept main floor featuring large windows, a corner gas fireplace, and a generous kitchen with a large peninsula, ample cabinetry, a corner pantry, and a charming dining nook. A convenient half-bath and direct access to the garage complete the main level. Upstairs, enjoy a versatile open den/bonus room—ideal for a home office or reading nook—plus a spacious primary suite with a 4-piece ensuite, two additional bedrooms, and another full bathroom. Extensive renovations in March 2025: Entire home professionally painted (including basement & garage floors). Brand-new vinyl plank flooring, New baseboards, window coverings, garburator, and a newer dishwasher. Condo fees include all exterior maintenance, snow removal, lawn care, driveway upkeep, and more. Located with quick access to Yellowhead and Highway 21, plus ample visitor parking. Must See

Built in 2007

Essential Information

MLS® #	E4445627
Price	\$385,000



Bedrooms	3
Bathrooms	2.50
Full Baths	2
Half Baths	1
Square Footage	1,448
Acres	0.00
Year Built	2007
Type	Condo / Townhouse
Sub-Type	Half Duplex
Style	2 Storey
Status	Active

Community Information

Address	128 21 Summerwood Drive
Area	Sherwood Park
Subdivision	Summerwood
City	Sherwood Park
County	ALBERTA
Province	AB
Postal Code	T8H 0C5

Amenities

Amenities	Deck, Hot Water Natural Gas, Parking-Visitor, Walkout Basement, See Remarks
Parking	Double Garage Attached

Interior

Interior Features	ensuite bathroom
Appliances	Dishwasher-Built-In, Dryer, Garage Opener, Microwave Hood Fan, Oven-Built-In, Refrigerator, Stove-Electric, Washer, Window Coverings
Heating	Forced Air-1, Natural Gas
Fireplace	Yes
Fireplaces	Glass Door
Stories	2
Has Basement	Yes
Basement	Full, Unfinished

Exterior

Exterior	Wood, Vinyl
----------	-------------

Exterior Features	Backs Onto Park/Trees, Landscaped, Low Maintenance Landscape, No Back Lane, Playground Nearby, Schools, Shopping Nearby, See Remarks
Roof	Asphalt Shingles
Construction	Wood, Vinyl
Foundation	Concrete Perimeter

Additional Information

Date Listed	July 3rd, 2025
Days on Market	13
Zoning	Zone 25
Condo Fee	\$360

DATA IS DEEMED RELIABLE BUT IS NOT GUARANTEED ACCURATE BY THE REALTORS® ASSOCIATION OF EDMONTON. COPYRIGHT 2025 BY THE REALTORS® ASSOCIATION OF EDMONTON. ALL RIGHTS RESERVED.Trademarks are owned or controlled by the Canadian Real Estate Association (CREA) and identify real estate professionals who are members of CREA (REALTOR®, REALTORS®) and/or the quality of services they provide (MLS®, Multiple Listing Service®)

Listing information last updated on July 16th, 2025 at 3:17am MDT