

\$359,000 - 19 Addison Crescent, St. Albert

MLS® #E4445842

\$359,000

3 Bedroom, 3.00 Bathroom, 1,206 sqft
Single Family on 0.00 Acres

Akinsdale, St. Albert, AB

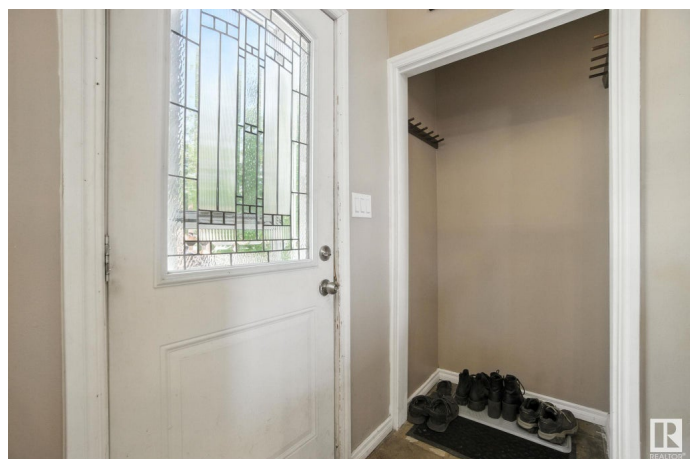
Welcome to 19 Addison Circle â€” A Perfect Starter Home in Sought-After St. Albert! Located in the family-friendly and highly desirable community of St. Albert, this charming 3-bedroom home offers incredible value and the ideal space to start your next chapter. With three generously sized bedrooms upstairs and an additional finished room in the basementâ€”perfect as a 4th bedroom, home office, or private sitting areaâ€”this home offers versatile living for todayâ€™s modern family. Step inside to discover beautiful hardwood flooring on the main level, complementing the bright and airy open-concept layout. The spacious dining area and breakfast bar make entertaining a breeze, while the kitchen provides ample cabinetry and functionality. Enjoy peace of mind as the fully fenced backyard backs directly onto a quiet parkâ€”perfect for kids, pets, or peaceful evenings outdoors. You'll also appreciate the extra-long driveway with parking space for up to four vehicles, making hosting guests or owning multiple vehicles si

Built in 1978

Essential Information

MLS® # E4445842

Price \$359,000



Bedrooms	3
Bathrooms	3.00
Full Baths	3
Square Footage	1,206
Acres	0.00
Year Built	1978
Type	Single Family
Sub-Type	Detached Single Family
Style	Bi-Level
Status	Active

Community Information

Address	19 Addison Crescent
Area	St. Albert
Subdivision	Akinsdale
City	St. Albert
County	ALBERTA
Province	AB
Postal Code	T8N 2S2

Amenities

Amenities	On Street Parking, Deck, No Smoking Home, Vinyl Windows
Parking Spaces	4
Parking	Front Drive Access, Parking Pad Cement/Paved

Interior

Interior Features	ensuite bathroom
Appliances	Dishwasher-Built-In, Dryer, Freezer, Hood Fan, Refrigerator, Storage Shed, Stove-Countertop Gas, Washer
Heating	Forced Air-2, Wood Stove, Natural Gas
Fireplaces	Woodstove
Stories	2
Has Basement	Yes
Basement	Full, Finished

Exterior

Exterior	Wood, Stucco, Vinyl
Exterior Features	Backs Onto Park/Trees, Fenced, Flat Site, Playground Nearby, Schools, Shopping Nearby

Roof	Asphalt Shingles
Construction	Wood, Stucco, Vinyl
Foundation	Concrete Perimeter

School Information

Elementary	Vital Grandin Catholic Sch
Middle	Secondaire Sainte Marguari
High	Secondaire Sainte Marguari

Additional Information

Date Listed	July 4th, 2025
Days on Market	2
Zoning	Zone 24

DATA IS DEEMED RELIABLE BUT IS NOT GUARANTEED ACCURATE BY THE REALTORS® ASSOCIATION OF EDMONTON. COPYRIGHT 2025 BY THE REALTORS® ASSOCIATION OF EDMONTON. ALL RIGHTS RESERVED. Trademarks are owned or controlled by the Canadian Real Estate Association (CREA) and identify real estate professionals who are members of CREA (REALTOR®, REALTORS®) and/or the quality of services they provide (MLS®, Multiple Listing Service®)

Listing information last updated on July 6th, 2025 at 1:32pm MDT