

\$589,000 - 39 Lennox Drive, St. Albert

MLS® #E4446743

\$589,000

4 Bedroom, 3.00 Bathroom, 1,549 sqft

Single Family on 0.00 Acres

Lacombe Park, St. Albert, AB

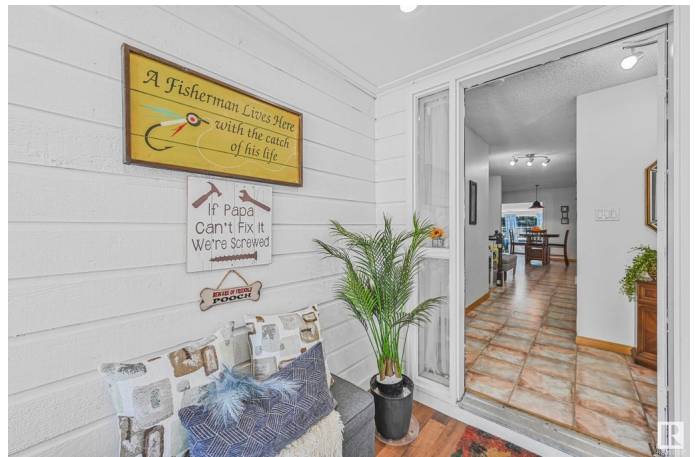
Custom-built Executive WALKOUT BUNGALOW offers elegance, magnificent living spaces. This sprawling home is perfect for a multigenerational family, featuring 1548 SQFT, 4 beds, 3 full baths, Separate entry into the basement with an IN-LAW suite. Stunning curb appeal. Inside the front entry boasts an impressive formal living area with a gas fireplace. Large south-facing 4 season addition off of the Kitchen. The Chef's Kitchen is outstanding from every angle, showcases tasteful finishes such newer counters, custom cabinetry with Stainless Steel Appliance's. 3 large bedrooms & 2 full bathrooms with a gorgeous Master Suite. Main Bathroom with a Jacuzzi Tub. Fully finished basement with a Walkout, perfect for an extended family with a large living room with fireplace, kitchen, bedroom, and full bathroom. Oversized Double Attached Garage is heated, Large driveway for ample parking. Upgrade's include: Kitchen, Bathrooms, A/C, Furnace Windows, Paint, Vinyl siding, Shingles, deck, lighting, fence, and landscaping.

Built in 1985

Essential Information

MLS® # E4446743

Price \$589,000



Bedrooms	4
Bathrooms	3.00
Full Baths	3
Square Footage	1,549
Acres	0.00
Year Built	1985
Type	Single Family
Sub-Type	Detached Single Family
Style	Bungalow
Status	Active

Community Information

Address	39 Lennox Drive
Area	St. Albert
Subdivision	Lacombe Park
City	St. Albert
County	ALBERTA
Province	AB
Postal Code	T8N 4L3

Amenities

Amenities	Air Conditioner
Parking	Double Garage Attached, Heated, Over Sized

Interior

Interior Features	ensuite bathroom
Appliances	Air Conditioning-Central, Dishwasher-Built-In, Dryer, Hood Fan, Washer, Refrigerators-Two, Stoves-Two
Heating	Forced Air-1, Natural Gas
Stories	2
Has Basement	Yes
Basement	Full, Finished

Exterior

Exterior	Wood, Vinyl
Exterior Features	Schools, Shopping Nearby
Roof	Asphalt Shingles
Construction	Wood, Vinyl
Foundation	Concrete Perimeter

Additional Information

Date Listed July 9th, 2025
Days on Market 5
Zoning Zone 24

DATA IS DEEMED RELIABLE BUT IS NOT GUARANTEED ACCURATE BY THE REALTORS® ASSOCIATION OF EDMONTON. COPYRIGHT 2025 BY THE REALTORS® ASSOCIATION OF EDMONTON. ALL RIGHTS RESERVED.Trademarks are owned or controlled by the Canadian Real Estate Association (CREA) and identify real estate professionals who are members of CREA (REALTOR®, REALTORS®) and/or the quality of services they provide (MLS®, Multiple Listing Service®)
Listing information last updated on July 14th, 2025 at 1:17pm MDT