

# \$299,800 - 15 230 Edwards Drive, Edmonton

MLS® #E4449821

**\$299,800**

3 Bedroom, 1.50 Bathroom, 1,223 sqft  
Condo / Townhouse on 0.00 Acres

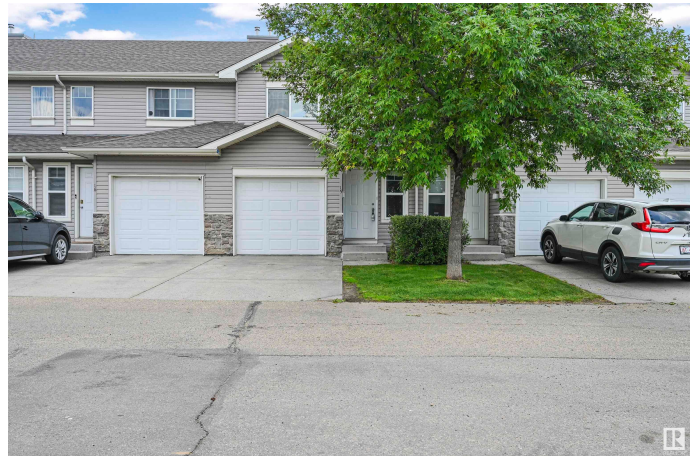
Ellerslie, Edmonton, AB

GREAT VALUE in a CONVENIENT COMMUNITY! With over 1,200sf plus an ATTACHED GARAGE this is a great starter home or investment opportunity. Main level boasts an open concept living room, dining nook & kitchen with ample counter space and cabinetry. Upstairs find 3 well-sized bedrooms and a full bathroom. Primary bedroom also boasts large walk-in closet and large windows. PLENTY of UPDATES including newer modern wide plank flooring, NEW carpets (July 2025), freshly painted & new bedroom light fixtures. Downstairs has plenty of potential for additional living space. Plus private patio to enjoy summer mornings and evenings. Parks, schools, retail, dining & easy access to major arteries in Ellerslie! Playground, walking paths/pond steps away. Enjoy low maintenance living at Stonebridge!

Built in 2003

## Essential Information

MLS® #	E4449821
Price	\$299,800
Bedrooms	3
Bathrooms	1.50
Full Baths	1
Half Baths	1
Square Footage	1,223



Acres	0.00
Year Built	2003
Type	Condo / Townhouse
Sub-Type	Townhouse
Style	2 Storey
Status	Active

### **Community Information**

Address	15 230 Edwards Drive
Area	Edmonton
Subdivision	Ellerslie
City	Edmonton
County	ALBERTA
Province	AB
Postal Code	T6X 1G7

### **Amenities**

Amenities	Detectors Smoke, Parking-Visitor
Parking Spaces	2
Parking	Single Garage Attached

### **Interior**

Appliances	Dishwasher-Built-In, Dryer, Garage Control, Garage Opener, Microwave Hood Fan, Refrigerator, Stove-Electric, Washer
Heating	Forced Air-1, Natural Gas
Stories	2
Has Basement	Yes
Basement	Full, Unfinished

### **Exterior**

Exterior	Wood, Vinyl
Exterior Features	Low Maintenance Landscape, Playground Nearby, Public Transportation, Schools, Shopping Nearby
Roof	Asphalt Shingles
Construction	Wood, Vinyl
Foundation	Concrete Perimeter

### **School Information**

Elementary	Sakaw/F.MichaelMireau
------------	-----------------------

Middle Kisw̃tisiwin/F.MichaelMir  
High JPercyPage/HolyTrinity

**Additional Information**

Date Listed July 25th, 2025  
Days on Market 9  
Zoning Zone 53  
Condo Fee \$348

DATA IS DEEMED RELIABLE BUT IS NOT GUARANTEED ACCURATE BY THE REALTORS® ASSOCIATION OF EDMONTON. COPYRIGHT 2025 BY THE REALTORS® ASSOCIATION OF EDMONTON. ALL RIGHTS RESERVED. Trademarks are owned or controlled by the Canadian Real Estate Association (CREA) and identify real estate professionals who are members of CREA (REALTOR®, REALTORS®) and/or the quality of services they provide (MLS®, Multiple Listing Service®)

Listing information last updated on August 3rd, 2025 at 1:47pm MDT