

\$424,900 - 11 201 Bothwell Drive, Sherwood Park

MLS® #E4452627

\$424,900

3 Bedroom, 3.00 Bathroom, 1,054 sqft

Condo / Townhouse on 0.00 Acres

Strathcona Village, Sherwood Park, AB

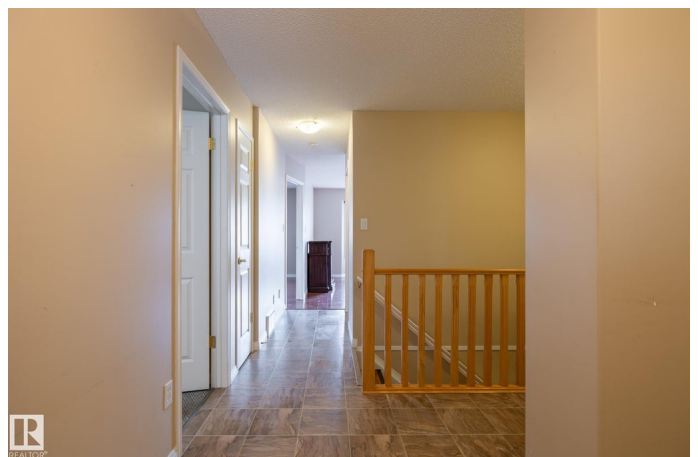
Welcome to Sunrise Park, offering adult living (45+), LOW CONDO FEES & a very convenient location. The main floor offers 2 bedrooms with a 3pcs. ensuite in the primary bedroom, which is a generous size with a walk-in closet, & will easily accommodate a king bed. Featuring gorgeous ENGINEERED HARDWOOD flooring, this beautifully maintained home offers OAK KITCHEN CABINETS W/PANTRY, all NEWER KITCHEN APPLIANCES (2 yrs), MAIN FLOOR LAUNDRY, 3 BATHS, & much more. The living room with an ELECTRIC FIREPLACE overlooks the GORGEOUS EAST FACING DECK complete with a LARGE GAZEBO, while the SUNROOM offers another great place for your morning coffee. The basement is FULLY FINISHED with a spacious living room, a 3 pcs. bath and is perfect for your guests, offering a spacious bedroom equipped with DOUBLE CLOSETS, and a wall unit. Other features include, plenty of STORAGE SPACE, BUILT-IN VACUUM, & CLOSE TO ALL AMENITIES.

Built in 2000

Essential Information

MLS® # E4452627

Price \$424,900



Bedrooms	3
Bathrooms	3.00
Full Baths	3
Square Footage	1,054
Acres	0.00
Year Built	2000
Type	Condo / Townhouse
Sub-Type	Half Duplex
Style	Bungalow
Status	Active

Community Information

Address	11 201 Bothwell Drive
Area	Sherwood Park
Subdivision	Strathcona Village
City	Sherwood Park
County	ALBERTA
Province	AB
Postal Code	T8H 2C8

Amenities

Amenities	Closet Organizers, No Animal Home, No Smoking Home, Sunroom, See Remarks
Parking	Double Garage Attached

Interior

Interior Features	ensuite bathroom
Appliances	Dishwasher-Built-In, Dryer, Oven-Microwave, Refrigerator, Stove-Electric, Vacuum System Attachments, Washer, Window Coverings
Heating	Forced Air-1, Natural Gas
Stories	2
Has Basement	Yes
Basement	Full, Finished

Exterior

Exterior	Wood, Brick, Vinyl
Exterior Features	Landscaped, Public Transportation
Roof	Asphalt Shingles

Construction	Wood, Brick, Vinyl
Foundation	Concrete Perimeter

School Information

Elementary	WOODBIDGE FARM
Middle	CLOVER BAR JR H
High	SALISBURY COMP

Additional Information

Date Listed	August 11th, 2025
Days on Market	4
Zoning	Zone 25
Condo Fee	\$157

DATA IS DEEMED RELIABLE BUT IS NOT GUARANTEED ACCURATE BY THE REALTORS® ASSOCIATION OF EDMONTON. COPYRIGHT 2025 BY THE REALTORS® ASSOCIATION OF EDMONTON. ALL RIGHTS RESERVED.Trademarks are owned or controlled by the Canadian Real Estate Association (CREA) and identify real estate professionals who are members of CREA (REALTOR®, REALTORS®) and/or the quality of services they provide (MLS®, Multiple Listing Service®)

Listing information last updated on August 15th, 2025 at 2:32am MDT