

# \$399,900 - 810 5151 Windermere Boulevard, Edmonton

MLS® #E4453671

**\$399,900**

2 Bedroom, 2.00 Bathroom, 1,262 sqft  
Condo / Townhouse on 0.00 Acres

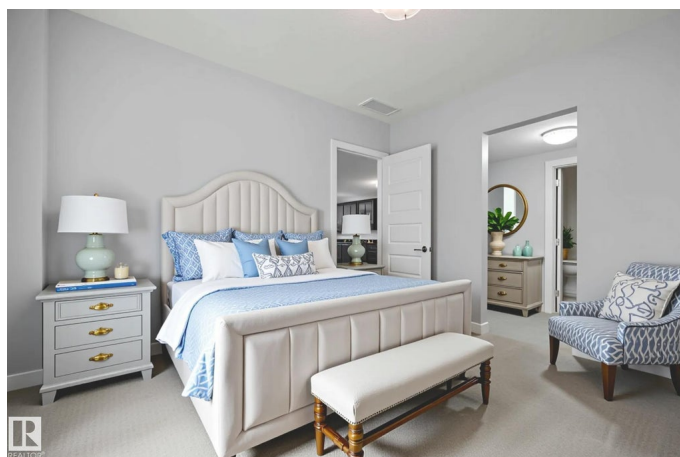
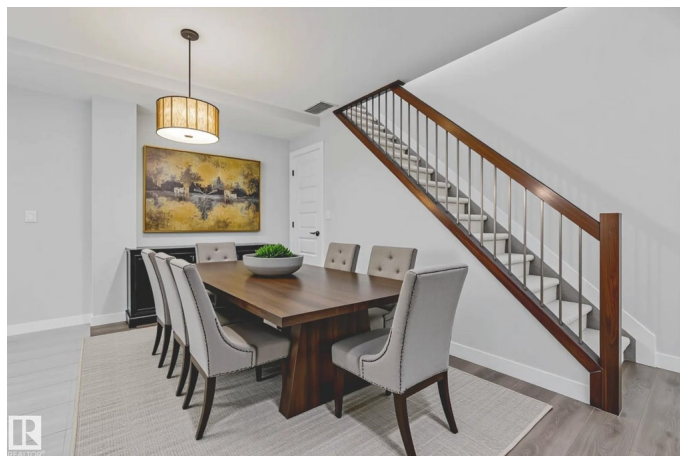
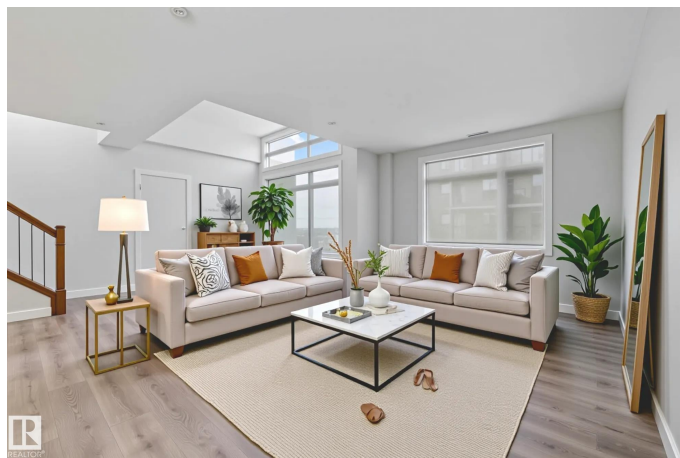
Ambleside, Edmonton, AB

Welcome to Signature at Ambleside in Southwest Edmonton! A modern mid-rise concrete and steel development with modern finishes throughout. This absolutely stunning TOP FLOOR, spacious unit features 2 Bedrooms, 2 full baths & 1 PARKING stall! The high ceilings make this space feel open and bright! A very unique stairway leads to a MASSIVE 2nd floor patio. The unit offers a timeless kitchen with full-size stainless steel appliances with dark, sleek cabinets + quartz countertops. BRAND NEW FLOORING JUST INSTALLED! Additional features include a roomy dining area, in-suite laundry. Pricing includes 1 titled underground stall, with an option to purchase a second. Signature is professionally managed, with on-site concierge service, ample visitor parking and all the best shopping & retail located right at your doorstep... Close to public transit, schools and the Anthony Henday freeway.

Built in 2014

## Essential Information

|            |           |
|------------|-----------|
| MLS® #     | E4453671  |
| Price      | \$399,900 |
| Bedrooms   | 2         |
| Bathrooms  | 2.00      |
| Full Baths | 2         |



|                |                        |
|----------------|------------------------|
| Square Footage | 1,262                  |
| Acres          | 0.00                   |
| Year Built     | 2014                   |
| Type           | Condo / Townhouse      |
| Sub-Type       | Apartment High Rise    |
| Style          | Single Level Apartment |
| Status         | Active                 |

### **Community Information**

|             |                               |
|-------------|-------------------------------|
| Address     | 810 5151 Windermere Boulevard |
| Area        | Edmonton                      |
| Subdivision | Ambleside                     |
| City        | Edmonton                      |
| County      | ALBERTA                       |
| Province    | AB                            |
| Postal Code | T6W 2K4                       |

### **Amenities**

|                |  |
|----------------|--|
| Amenities      | Air Conditioner, Detectors Smoke, Exercise Room, Parking-Visitor, Security Door, Concierge Service |
| Parking Spaces | 1  |
| Parking        | Underground  |

### **Interior**

|                   |  |
|-------------------|--|
| Interior Features | ensuite bathroom   |
| Appliances        | Dishwasher-Built-In, Dryer, Microwave Hood Fan, Refrigerator, Stove-Electric, Washer |
| Heating           | Heat Pump, Natural Gas   |
| # of Stories      | 8  |
| Stories           | 1  |
| Has Basement      | Yes  |
| Basement          | None, No Basement  |

### **Exterior**

|                   |  |
|-------------------|--|
| Exterior          | Concrete, Stone, Stucco  |
| Exterior Features | Playground Nearby, Public Transportation, Schools, Shopping Nearby |
| Roof              | Tar & Gravel   |
| Construction      | Concrete, Stone, Stucco  |
| Foundation        | Concrete Perimeter   |

## Additional Information

|                |                   |
|----------------|-------------------|
| Date Listed    | August 19th, 2025 |
| Days on Market | 2                 |
| Zoning         | Zone 56           |
| HOA Fees       | 50                |
| HOA Fees Freq. | Annually          |
| Condo Fee      | \$697             |

DATA IS DEEMED RELIABLE BUT IS NOT GUARANTEED ACCURATE BY THE REALTORS® ASSOCIATION OF EDMONTON. COPYRIGHT 2025 BY THE REALTORS® ASSOCIATION OF EDMONTON. ALL RIGHTS RESERVED. Trademarks are owned or controlled by the Canadian Real Estate Association (CREA) and identify real estate professionals who are members of CREA (REALTOR®, REALTORS®) and/or the quality of services they provide (MLS®, Multiple Listing Service®)

Listing information last updated on August 21st, 2025 at 1:32am MDT