

## \$299,900 - 112a 511 Queen Street, Spruce Grove

MLS® #E4458225

**\$299,900**

2 Bedroom, 1.00 Bathroom, 876 sqft  
Condo / Townhouse on 0.00 Acres

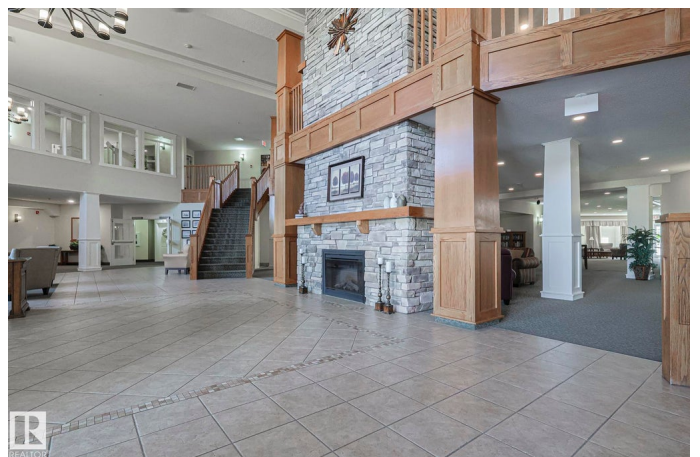
City Centre, Spruce Grove, AB

An Absolutely Perfect 1 bed + 1 DEN custom designed west facing unit in Windsor Estates In Spruce Grove! The Estates is known for being impeccably managed, having a wonderful vibrant community of 55+ living, 10/10 aesthetically maintained grounds(\*\*new items added yearly like the outdoor gazebo/ pergola area), games nights, patios, and plenty of community events! Heated underground TITLED PARKING + cage storage and CAR WASH!!, CLOSE TO THE ELEVATOR for quick in/out access! It's WALKING DISTANCE to the Rexall Health Center as well as the Spruce Grove trail walking system. STUNNING unit w custom features that this original owner picked out herself incl white shaker cabinets, custom backsplash and complimentary HIGH END LAMINATE. LIGHT FILLED unit with a west facing bedroom, living room and MASSIVE covered deck! In suite laundry/storage, big front door entrance and a perfect sized office/den! Beautiful Unit with lovely upgrades ready for a QUICK POSSESSION!

Built in 2014

### Essential Information

MLS® #	E4458225
Price	\$299,900



Bedrooms	2
Bathrooms	1.00
Full Baths	1
Square Footage	876
Acres	0.00
Year Built	2014
Type	Condo / Townhouse
Sub-Type	Lowrise Apartment
Style	Multi Level Apartment
Status	Active

### **Community Information**

Address	112a 511 Queen Street
Area	Spruce Grove
Subdivision	City Centre
City	Spruce Grove
County	ALBERTA
Province	AB
Postal Code	T7X 0G4

### **Amenities**

Amenities	Parking-Plug-Ins, Parking-Visitor, Party Room, Recreation Room/Centre, Security Door, Social Rooms, Vinyl Windows, Storage Cage
Parking Spaces	1
Parking	Stall

### **Interior**

Appliances	Dishwasher-Built-In, Dryer, Microwave Hood Fan, Refrigerator, Stove-Electric, Washer, Window Coverings
Heating	Fan Coil, Hot Water, Natural Gas
# of Stories	4
Stories	4
Has Basement	Yes
Basement	None, No Basement

### **Exterior**

Exterior	Concrete, Stone, Vinyl
Exterior Features	Golf Nearby, Landscaped, No Through Road, Private Setting, Public Transportation, Schools, Shopping Nearby

Roof	Asphalt Shingles
Construction	Concrete, Stone, Vinyl
Foundation	Wood

### **Additional Information**

Date Listed	September 17th, 2025
Days on Market	28
Zoning	Zone 91
Condo Fee	\$506

DATA IS DEEMED RELIABLE BUT IS NOT GUARANTEED ACCURATE BY THE REALTORS® ASSOCIATION OF EDMONTON. COPYRIGHT 2025 BY THE REALTORS® ASSOCIATION OF EDMONTON. ALL RIGHTS RESERVED. Trademarks are owned or controlled by the Canadian Real Estate Association (CREA) and identify real estate professionals who are members of CREA (REALTOR®, REALTORS®) and/or the quality of services they provide (MLS®, Multiple Listing Service®)

Listing information last updated on October 15th, 2025 at 9:02pm MDT