

Courtesy Of Fan Yang Of Mozaic Realty Group

\$659,800 - 4879 Kinney Road, Edmonton

MLS® #E4461852

\$659,800

6 Bedroom, 4.00 Bathroom, 1,886 sqft
Single Family on 0.00 Acres

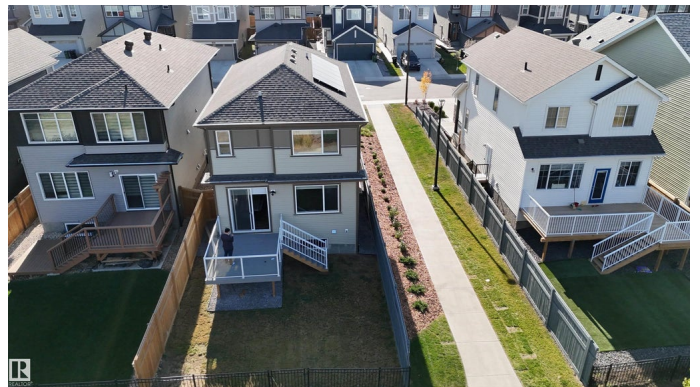
Keswick, Edmonton, AB

An exceptional INVESTMENT and LIFESTYLE opportunity is available in the Keswick Landing community. This impeccable 2022 Jayman-built home combines premium suburban living with a strategic financial advantage, featuring a LEGAL BASEMENT SUITE that serves as an ideal mortgage helper. The home itself is appointed with an open-concept layout under 9' ceilings, a chef's quartz kitchen with an extended island and walk-through pantry, and a spacious main-floor bedroom and full bathroom. The upper level boasts a bonus room and a luxurious primary suite with a walk-in closet. The newly developed two-bedroom legal basement suite offers excellent potential for both long-term and short-term rental opportunities. Enhanced by modern features like solar panels and an electric car charging outlet, the property also offers a professionally landscaped backyard with an expansive deck that backs onto walking trails. Its prime location is near Joey Moss School, Currents of Windermere, and major transportation routes.

Built in 2022

Essential Information

MLS® #	E4461852
Price	\$659,800



Bedrooms	6
Bathrooms	4.00
Full Baths	4
Square Footage	1,886
Acres	0.00
Year Built	2022
Type	Single Family
Sub-Type	Detached Single Family
Style	2 Storey
Status	Active

Community Information

Address	4879 Kinney Road
Area	Edmonton
Subdivision	Keswick
City	Edmonton
County	ALBERTA
Province	AB
Postal Code	T6W 5G3

Amenities

Amenities	Carbon Monoxide Detectors, Ceiling 9 ft., Deck, Patio, See Remarks, Solar Equipment
Parking	Double Garage Attached

Interior

Interior Features	ensuite bathroom
Appliances	Garage Opener, Dryer-Two, Refrigerators-Two, Stoves-Two, Washers-Two, Dishwasher-Two, Microwave Hood Fan-Two, TV Wall Mount
Heating	Forced Air-1, Natural Gas
Stories	3
Has Suite	Yes
Has Basement	Yes
Basement	Full, Finished

Exterior

Exterior	Wood, Stone, Vinyl
Exterior Features	Airport Nearby, Fenced, Landscaped, Public Transportation, Schools,

Shopping Nearby, See Remarks

Roof Asphalt Shingles
Construction Wood, Stone, Vinyl
Foundation Concrete Perimeter

Additional Information

Date Listed October 10th, 2025
Days on Market 5
Zoning Zone 56

DATA IS DEEMED RELIABLE BUT IS NOT GUARANTEED ACCURATE BY THE REALTORS® ASSOCIATION OF EDMONTON. COPYRIGHT 2025 BY THE REALTORS® ASSOCIATION OF EDMONTON. ALL RIGHTS RESERVED. Trademarks are owned or controlled by the Canadian Real Estate Association (CREA) and identify real estate professionals who are members of CREA (REALTOR®, REALTORS®) and/or the quality of services they provide (MLS®, Multiple Listing Service®)

Listing information last updated on October 14th, 2025 at 11:47pm MDT